



UE2NL mouse mAb

Catalog No	BYmab-08984
Isotype	IgG
Reactivity	Human;Rat;Mouse;
Applications	WB
Gene Name	UBE2NL
Protein Name	UE2NL
Immunogen	Synthesized peptide derived from human UE2NL AA range: 64-114
Specificity	This antibody detects endogenous levels of UE2NL at Human
Formulation	Liquid in PBS containing 50% glycerol, 0.5% BSA and 0.02% sodium azide.
Source	Monoclonal, Mouse,IgG
Purification	The antibody was affinity-purified from mouse antiserum by affinity-chromatography using epitope-specific immunogen.
Dilution	WB 1:500-2000
Concentration	1 mg/ml
Purity	≥90%
Storage Stability	-20°C/1 year
Synonyms	
Observed Band	
Cell Pathway	nucleus,cytoplasm,extracellular exosome,
Tissue Specificity	Expressed in epididymis (at protein level).
Function	caution:Could be the product of a pseudogene. The potential active site Cys residue in position 88 is replaced by a Ser.,similarity:Belongs to the ubiquitin-conjugating enzyme family.,
Background	This gene is intronless and encodes a member of the ubiquitin-conjugating enzyme family. The protein product is 91% identical to ubiquitin-conjugating enzyme E2N, a multi-exon gene product. This locus represents a polymorphic pseudogene, where some individuals contain an allele that can encode a full-length protein, while others have a non-functional allele containing a premature stop codon (reference SNP rs237520) that truncates the coding sequence. [provided by RefSeq, Jun 2014],

Nanjing BYabscience technology Co.,Ltd



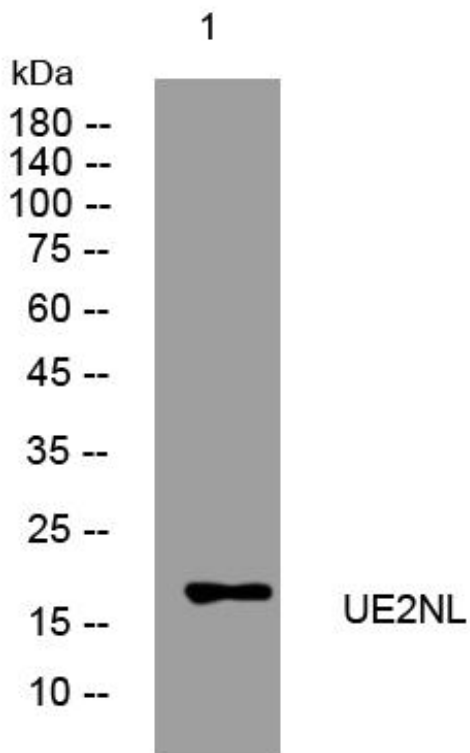
matters needing attention

Avoid repeated freezing and thawing!

Usage suggestions

This product can be used in immunological reaction related experiments. For more information, please consult technical personnel.

Products Images



Western Blot analysis of various cells using UE2NL mouse mAb