



# GLYL2 mouse mAb

|                           |                                                                                                                                                                                                                                                                                                            |
|---------------------------|------------------------------------------------------------------------------------------------------------------------------------------------------------------------------------------------------------------------------------------------------------------------------------------------------------|
| Catalog No                | BYmab-08982                                                                                                                                                                                                                                                                                                |
| Isotype                   | IgG                                                                                                                                                                                                                                                                                                        |
| Reactivity                | Human;Rat;Mouse;                                                                                                                                                                                                                                                                                           |
| Applications              | WB                                                                                                                                                                                                                                                                                                         |
| Gene Name                 | GLYATL2                                                                                                                                                                                                                                                                                                    |
| Protein Name              | GLYL2                                                                                                                                                                                                                                                                                                      |
| Immunogen                 | Synthesized peptide derived from human GLYL2 AA range: 84-134                                                                                                                                                                                                                                              |
| Specificity               | This antibody detects endogenous levels of GLYL2 at Human                                                                                                                                                                                                                                                  |
| Formulation               | Liquid in PBS containing 50% glycerol, 0.5% BSA and 0.02% sodium azide.                                                                                                                                                                                                                                    |
| Source                    | Monoclonal, Mouse,IgG                                                                                                                                                                                                                                                                                      |
| Purification              | The antibody was affinity-purified from mouse antiserum by affinity-chromatography using epitope-specific immunogen.                                                                                                                                                                                       |
| Dilution                  | WB 1:500-2000                                                                                                                                                                                                                                                                                              |
| Concentration             | 1 mg/ml                                                                                                                                                                                                                                                                                                    |
| Purity                    | ≥90%                                                                                                                                                                                                                                                                                                       |
| Storage Stability         | -20°C/1 year                                                                                                                                                                                                                                                                                               |
| Synonyms                  |                                                                                                                                                                                                                                                                                                            |
| Observed Band             |                                                                                                                                                                                                                                                                                                            |
| Cell Pathway              | Endoplasmic reticulum .                                                                                                                                                                                                                                                                                    |
| Tissue Specificity        | Expressed at highest levels in salivary gland and trachea. Also detected in thyroid gland, spinal cord, prostate, lung and fetal brain.                                                                                                                                                                    |
| Function                  | catalytic activity:Acyl-CoA + glycine = CoA + N-acylglycine.,function:Mitochondrial acyltransferase which transfers the acyl group to the N-terminus of glycine. Can conjugate a multitude of substrates to form a variety of N-acylglycines.,similarity:Belongs to the glycine N-acyltransferase family., |
| Background                |                                                                                                                                                                                                                                                                                                            |
| matters needing attention | Avoid repeated freezing and thawing!                                                                                                                                                                                                                                                                       |

Nanjing BYabscience technology Co.,Ltd

网址: [www.njbybio.com](http://www.njbybio.com)

官方热线: 025-5229-8998

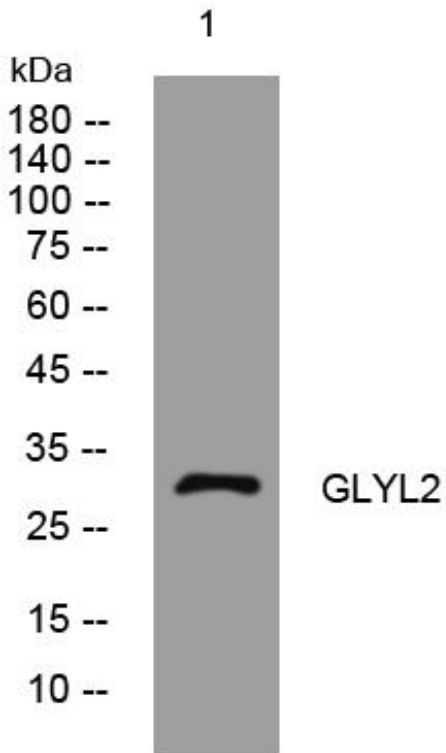
监督电话: 15950492658



### Usage suggestions

This product can be used in immunological reaction related experiments. For more information, please consult technical personnel.

## Products Images



Western Blot analysis of various cells using GLYL2 mouse mAb

Nanjing BYabs science technology Co.,Ltd

网址: [www.njbybio.com](http://www.njbybio.com)

官方热线: 025-5229-8998

监督电话: 15950492658