



TKTL2 mouse mAb

Catalog No	BYmab-08979
Isotype	IgG
Reactivity	Human; Mouse
Applications	WB
Gene Name	TKTL2
Protein Name	TKTL2
Immunogen	Synthesized peptide derived from human TKTL2 AA range: 484-534
Specificity	This antibody detects endogenous levels of TKTL2 at Human/Mouse
Formulation	Liquid in PBS containing 50% glycerol, 0.5% BSA and 0.02% sodium azide.
Source	Monoclonal, Mouse,IgG
Purification	The antibody was affinity-purified from mouse antiserum by affinity-chromatography using epitope-specific immunogen.
Dilution	WB 1:500-2000
Concentration	1 mg/ml
Purity	≥90%
Storage Stability	-20°C/1 year
Synonyms	
Observed Band	
Cell Pathway	cytoplasm,
Tissue Specificity	Overexpressed in hepatoma cancer cells.
Function	catalytic activity:Sedoheptulose 7-phosphate + D-glyceraldehyde 3-phosphate = D-ribose 5-phosphate + D-xylulose 5-phosphate.,cofactor:Bounds 1 calcium ion per subunit.,cofactor:Bounds 1 thiamine pyrophosphate per subunit.,similarity:Belongs to the transketolase family.,
Background	
matters needing attention	Avoid repeated freezing and thawing!

Nanjing BYabscience technology Co.,Ltd

网址: www.njbybio.com

官方热线: 025-5229-8998

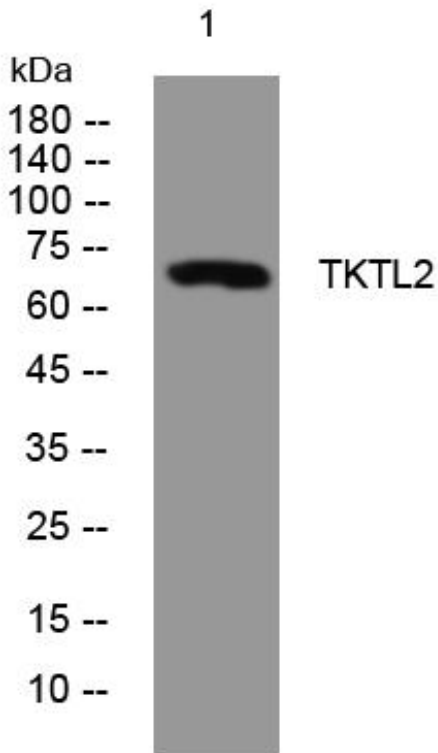
监督电话: 15950492658



Usage suggestions

This product can be used in immunological reaction related experiments. For more information, please consult technical personnel.

Products Images



Western Blot analysis of various cells using TKTL2 mouse mAb

Nanjing BYabscience technology Co.,Ltd

网址: www.njbybio.com

官方热线: 025-5229-8998

监督电话: 15950492658