



ACTT1 mouse mAb

Catalog No	BYmab-08975
Isotype	IgG
Reactivity	Human; Mouse;Rat
Applications	WB
Gene Name	ACTRT1 ARPT1 HSD27
Protein Name	ACTT1
Immunogen	Synthesized peptide derived from human ACTT1 AA range: 241-291
Specificity	This antibody detects endogenous levels of ACTT1 at Human/Mouse/Rat
Formulation	Liquid in PBS containing 50% glycerol, 0.5% BSA and 0.02% sodium azide.
Source	Monoclonal, Mouse,IgG
Purification	The antibody was affinity-purified from mouse antiserum by affinity-chromatography using epitope-specific immunogen.
Dilution	WB 1:500-2000
Concentration	1 mg/ml
Purity	≥90%
Storage Stability	-20°C/1 year
Synonyms	
Observed Band	
Cell Pathway	Cytoplasm, cytoskeleton . Cytoplasm . Nucleus . Both detected in the nucleus and cytoplasm, localizes to the nucleus where it binds chromatin upon stimulation of the Hedgehog pathway. .
Tissue Specificity	In skin, expressed in the basal, spinous and granular layers of the epidermis. Also expressed in hair follicles, sebaceous glands, eccrine sweat glands and semen.
Function	similarity:Belongs to the actin family.,
Background	This gene encodes a protein related to the cytoskeletal protein beta-actin. This protein is a major component of the calyx in the perinuclear theca of mammalian sperm heads, and it therefore likely functions in spermatid formation. This gene is intronless and is similar to a related gene located on chromosome 1. A related pseudogene has also been identified approximately 75 kb downstream of this gene on chromosome X. [provided by RefSeq, May 2010],

Nanjing BYabscience technology Co.,Ltd

网址: www.njbybio.com

官方热线: 025-5229-8998

监督电话: 15950492658



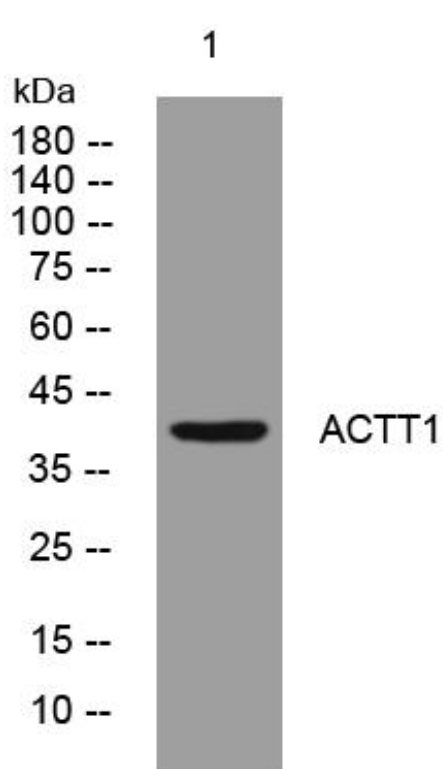
matters needing attention

Avoid repeated freezing and thawing!

Usage suggestions

This product can be used in immunological reaction related experiments. For more information, please consult technical personnel.

Products Images



Western Blot analysis of various cells using ACTT1 mouse mAb