



COBL1 mouse mAb

Catalog No	BYmab-08973
Isotype	IgG
Reactivity	Human; Mouse
Applications	WB
Gene Name	COBLL1 KIAA0977
Protein Name	COBL1
Immunogen	Synthesized peptide derived from human COBL1 AA range: 725-775
Specificity	This antibody detects endogenous levels of COBL1 at Human/Mouse
Formulation	Liquid in PBS containing 50% glycerol, 0.5% BSA and 0.02% sodium azide.
Source	Monoclonal, Mouse,IgG
Purification	The antibody was affinity-purified from mouse antiserum by affinity-chromatography using epitope-specific immunogen.
Dilution	WB 1:500-2000
Concentration	1 mg/ml
Purity	≥90%
Storage Stability	-20°C/1 year
Synonyms	
Observed Band	
Cell Pathway	cell-cell adherens junction,extracellular exosome,
Tissue Specificity	
Function	similarity:Contains 1 WH2 domain.,
Background	
matters needing attention	Avoid repeated freezing and thawing!
Usage suggestions	This product can be used in immunological reaction related experiments. For more information, please consult technical personnel.

Nanjing BYabscience technology Co.,Ltd

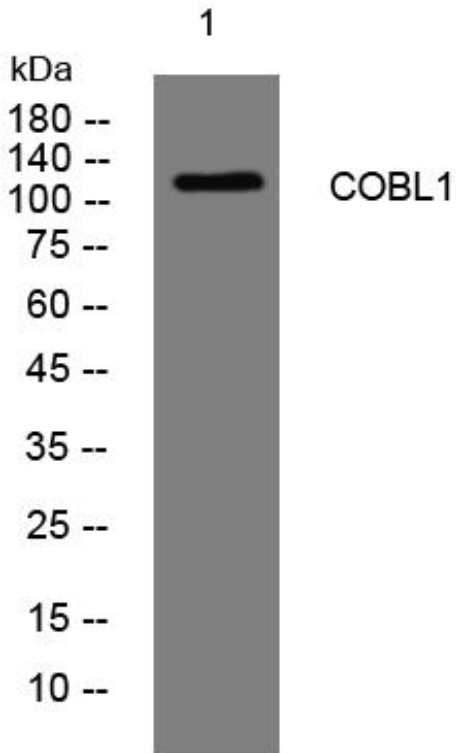
网址: www.njbybio.com

官方热线: 025-5229-8998

监督电话: 15950492658



Products Images



Western Blot analysis of various cells using COBL1 mouse mAb