



RPR1B mouse mAb

Catalog No	BYmab-08961
Isotype	IgG
Reactivity	Human; Mouse
Applications	WB
Gene Name	RPRD1B C20orf77 CREPT
Protein Name	RPR1B
Immunogen	Synthesized peptide derived from human RPR1B AA range: 248-298
Specificity	This antibody detects endogenous levels of RPR1B at Human/Mouse
Formulation	Liquid in PBS containing 50% glycerol, 0.5% BSA and 0.02% sodium azide.
Source	Monoclonal, Mouse,IgG
Purification	The antibody was affinity-purified from mouse antiserum by affinity-chromatography using epitope-specific immunogen.
Dilution	WB 1:500-2000
Concentration	1 mg/ml
Purity	≥90%
Storage Stability	-20°C/1 year
Synonyms	
Observed Band	
Cell Pathway	Nucleus .
Tissue Specificity	Preferentially expressed in a range of tumor tissues including colon, lung, liver, breast, prostate, stomach, uterine endometrium and cervical cancers with higher levels in tumors than in adjacent non-tumor tissue (at protein level).
Function	sequence caution:Contaminating sequence. Potential poly-A sequence.,similarity:Belongs to the UPF0400 (RTT103) family.,similarity:Contains 1 CID domain.,
Background	
matters needing attention	Avoid repeated freezing and thawing!

Nanjing BYabscience technology Co.,Ltd

网址: www.njbybio.com

官方热线: 025-5229-8998

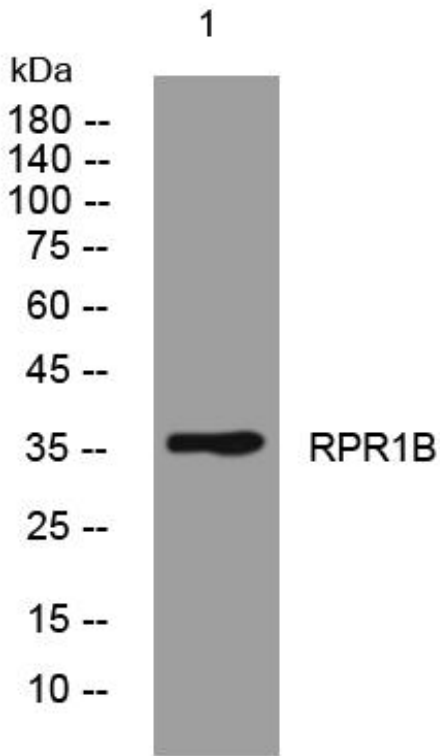
监督电话: 15950492658



Usage suggestions

This product can be used in immunological reaction related experiments. For more information, please consult technical personnel.

Products Images



Western Blot analysis of various cells using RPR1B mouse mAb

Nanjing BYabscience technology Co.,Ltd

网址: www.njbybio.com

官方热线: 025-5229-8998

监督电话: 15950492658