



# STB5L mouse mAb

Catalog No	BYmab-08957
Isotype	IgG
Reactivity	Human; Mouse
Applications	WB
Gene Name	STXBP5L KIAA1006 LLGL4
Protein Name	STB5L
Immunogen	Synthesized peptide derived from human STB5L AA range: 990-1040
Specificity	This antibody detects endogenous levels of STB5L at Human/Mouse
Formulation	Liquid in PBS containing 50% glycerol, 0.5% BSA and 0.02% sodium azide.
Source	Monoclonal, Mouse,IgG
Purification	The antibody was affinity-purified from mouse antiserum by affinity-chromatography using epitope-specific immunogen.
Dilution	WB 1:500-2000
Concentration	1 mg/ml
Purity	≥90%
Storage Stability	-20°C/1 year
Synonyms	
Observed Band	
Cell Pathway	Cytoplasm . Cell membrane ; Peripheral membrane protein . Membrane ; Peripheral membrane protein . Cytoplasmic, and associated with vesicular membranes and the plasma membrane. .
Tissue Specificity	Detected in kidney, hippocampus and lung carcinoma.
Function	function:May play a role in vesicle trafficking and exocytosis .,similarity:Belongs to the WD repeat L(2)GL family.,similarity:Contains 1 v-SNARE coiled-coil homology domain.,similarity:Contains 14 WD repeats.,subcellular location:Cytoplasmic, and associated with vesicular membranes and the plasma membrane.,tissue specificity:Detected in kidney, hippocampus and lung carcinoma.,
Background	
matters needing attention	Avoid repeated freezing and thawing!

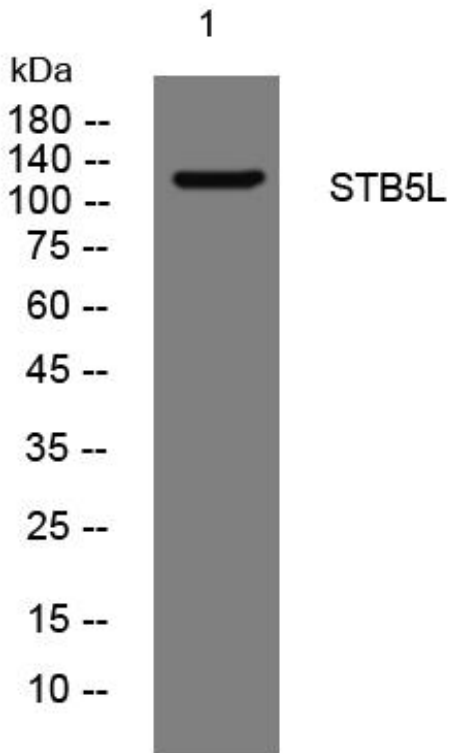
Nanjing BYabscience technology Co.,Ltd



### Usage suggestions

This product can be used in immunological reaction related experiments. For more information, please consult technical personnel.

## Products Images



Western Blot analysis of various cells using STB5L mouse mAb

Nanjing BYabscience technology Co.,Ltd

网址: [www.njbybio.com](http://www.njbybio.com)

官方热线: 025-5229-8998

监督电话: 15950492658