



MS4A7 mouse mAb

Catalog No	BYmab-08954
Isotype	IgG
Reactivity	Human;Rat;Mouse;
Applications	WB
Gene Name	MS4A7 4SPAN2 CD20L4 CFFM4
Protein Name	MS4A7
Immunogen	Synthesized peptide derived from human MS4A7 AA range: 3-53
Specificity	This antibody detects endogenous levels of MS4A7 at Human
Formulation	Liquid in PBS containing 50% glycerol, 0.5% BSA and 0.02% sodium azide.
Source	Monoclonal, Mouse,IgG
Purification	The antibody was affinity-purified from mouse antiserum by affinity-chromatography using epitope-specific immunogen.
Dilution	WB 1:500-2000
Concentration	1 mg/ml
Purity	≥90%
Storage Stability	-20°C/1 year
Synonyms	
Observed Band	
Cell Pathway	Membrane; Multi-pass membrane protein.
Tissue Specificity	Ubiquitous expression in normal tissues. Expression is more elevated in adult liver, lung, spleen, and heart than in their fetal counterparts, and is higher in normal tissues than in the cancerous tissue or cell lines. Low levels of expression were detected in the promonocytic stage, whereas high levels of expression were detected in mature monocytes.
Function	function:May be involved in signal transduction as a component of a multimeric receptor complex.,similarity:Belongs to the MS4A family.,tissue specificity:Ubiquitous expression in normal tissues. Expression is more elevated in adult liver, lung, spleen, and heart than in their fetal counterparts, and is higher in normal tissues than in the cancerous tissue or cell lines. Low levels of expression were detected in the promonocytic stage, whereas high levels of expression were detected in mature monocytes.,

Nanjing BYabscience technology Co.,Ltd

网址: www.njbybio.com

官方热线: 025-5229-8998

监督电话: 15950492658



Background

This gene encodes a member of the membrane-spanning 4A gene family, members of which are characterized by common structural features and similar intron/exon splice boundaries and display unique expression patterns in hematopoietic cells and nonlymphoid tissues. This family member is associated with mature cellular function in the monocytic lineage, and it may be a component of a receptor complex involved in signal transduction. This gene is localized to 11q12, in a cluster of other family members. At least four alternatively spliced transcript variants encoding two distinct isoforms have been observed. [provided by RefSeq, Jul 2008],

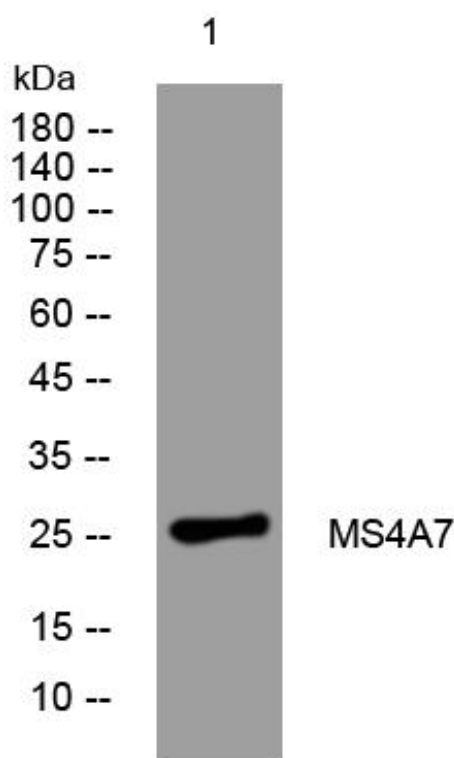
matters needing attention

Avoid repeated freezing and thawing!

Usage suggestions

This product can be used in immunological reaction related experiments. For more information, please consult technical personnel.

Products Images



Western Blot analysis of various cells using MS4A7 mouse mAb