



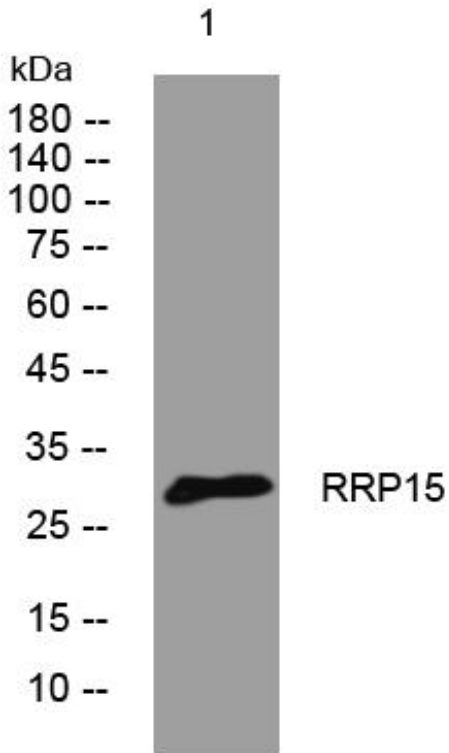
RRP15 mouse mAb

Catalog No	BYmab-08953
Isotype	IgG
Reactivity	Human; Mouse;Rat
Applications	WB
Gene Name	RRP15 KIAA0507 CGI-115
Protein Name	RRP15
Immunogen	Synthesized peptide derived from human RRP15 AA range: 189-239
Specificity	This antibody detects endogenous levels of RRP15 at Human/Mouse/Rat
Formulation	Liquid in PBS containing 50% glycerol, 0.5% BSA and 0.02% sodium azide.
Source	Monoclonal, Mouse,IgG
Purification	The antibody was affinity-purified from mouse antiserum by affinity-chromatography using epitope-specific immunogen.
Dilution	WB 1:500-2000
Concentration	1 mg/ml
Purity	≥90%
Storage Stability	-20°C/1 year
Synonyms	
Observed Band	
Cell Pathway	nucleus,nucleolus,mitochondrion,preribosome, large subunit precursor,
Tissue Specificity	
Function	similarity:Belongs to the RRP15 family.,
Background	This gene encodes a protein that co-purifies with human nucleoli. A similar protein in budding yeast is a component of pre-60S ribosomal particles, and is required for the early maturation steps of the 60S subunit. [provided by RefSeq, Jul 2008],
matters needing attention	Avoid repeated freezing and thawing!
Usage suggestions	This product can be used in immunological reaction related experiments. For more information, please consult technical personnel.

Nanjing BYabscience technology Co.,Ltd



Products Images



Western Blot analysis of various cells using RRP15 mouse mAb