



METH mouse mAb

Catalog No	BYmab-08950
Isotype	IgG
Reactivity	Human; Mouse;Rat
Applications	WB
Gene Name	MTR
Protein Name	METH
Immunogen	Synthesized peptide derived from human METH AA range: 1110-1160
Specificity	This antibody detects endogenous levels of METH at Human/Mouse/Rat
Formulation	Liquid in PBS containing 50% glycerol, 0.5% BSA and 0.02% sodium azide.
Source	Monoclonal, Mouse,IgG
Purification	The antibody was affinity-purified from mouse antiserum by affinity-chromatography using epitope-specific immunogen.
Dilution	WB 1:500-2000
Concentration	1 mg/ml
Purity	≥90%
Storage Stability	-20°C/1 year
Synonyms	
Observed Band	
Cell Pathway	Cytoplasm .
Tissue Specificity	Widely expressed. Expressed at the highest levels in pancreas, heart, brain, skeletal muscle and placenta (PubMed:8968737, PubMed:8968735). Expressed at lower levels in lung, liver and kidney (PubMed:8968737, PubMed:8968735).
Function	catalytic activity:5-methyltetrahydrofolate + L-homocysteine = tetrahydrofolate + L-methionine.,cofactor:Binds 1 zinc ion per subunit.,cofactor:Methylcobalamin (MeCBL).,disease:Defects in MTR are the cause of methylcobalamin deficiency type G (cblG) [MIM:250940]; also known as homocystinuria-megaloblastic anemia complementation type G. It is an autosomal recessive inherited disease that causes mental retardation, macrocytic anemia, and homocystinuria. Mild deficiency in MS activity could be associated with mild hyperhomocysteinemia, a risk factor for cardiovascular disease and possibly neural tube defects. MS mutations could also be involved in tumorigenesis.,disease:Defects in MTR may be a cause of susceptibility to folate-sensitive neural tube defects (folate-sensitive NTD) [MIM:601634]. The most common NTDs are open spina bifida

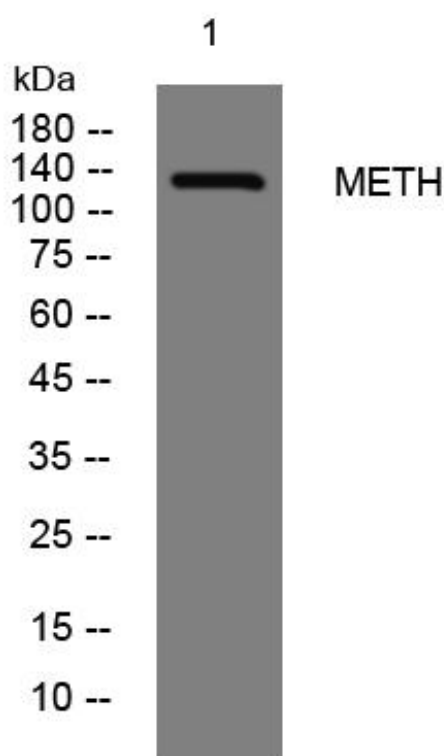
Nanjing BYabscience technology Co.,Ltd



(myelomeningocele) and anencephaly. Genetic defects in M

Background	This gene encodes the 5-methyltetrahydrofolate-homocysteine methyltransferase. This enzyme, also known as cobalamin-dependent methionine synthase, catalyzes the final step in methionine biosynthesis. Mutations in MTR have been identified as the underlying cause of methylcobalamin deficiency complementation group G. Alternatively spliced transcript variants encoding distinct isoforms have been found for this gene. [provided by RefSeq, May 2014],
matters needing attention	Avoid repeated freezing and thawing!
Usage suggestions	This product can be used in immunological reaction related experiments. For more information, please consult technical personnel.

Products Images



Western Blot analysis of various cells using METH mouse mAb

Nanjing BYabscience technology Co.,Ltd