



# K1737 mouse mAb

|                           |   |
|---------------------------|---|
| Catalog No                | BYmab-08947   |
| Isotype                   | IgG   |
| Reactivity                | Human; Mouse  |
| Applications              | WB  |
| Gene Name                 | KIAA1737  |
| Protein Name              | K1737   |
| Immunogen                 | Synthesized peptide derived from human K1737 AA range: 141-191  |
| Specificity               | This antibody detects endogenous levels of K1737 at Human/Mouse   |
| Formulation               | Liquid in PBS containing 50% glycerol, 0.5% BSA and 0.02% sodium azide.   |
| Source                    | Monoclonal, Mouse,IgG   |
| Purification              | The antibody was affinity-purified from mouse antiserum by affinity-chromatography using epitope-specific immunogen.  |
| Dilution                  | WB 1:500-2000   |
| Concentration             | 1 mg/ml   |
| Purity                    | ≥90%  |
| Storage Stability         | -20°C/1 year  |
| Synonyms                  |   |
| Observed Band             |   |
| Cell Pathway              | Nucleus . Cytoplasm, cytosol . Predominantly localizes to the nucleus, where it co-localizes with CLOCK. At the G1/S boundary, partially translocated to the cytosol. . |
| Tissue Specificity        |   |
| Function                  |   |
| Background                |   |
| matters needing attention | Avoid repeated freezing and thawing!  |

Nanjing BYabscience technology Co.,Ltd

网址: [www.njbybio.com](http://www.njbybio.com)

官方热线: 025-5229-8998

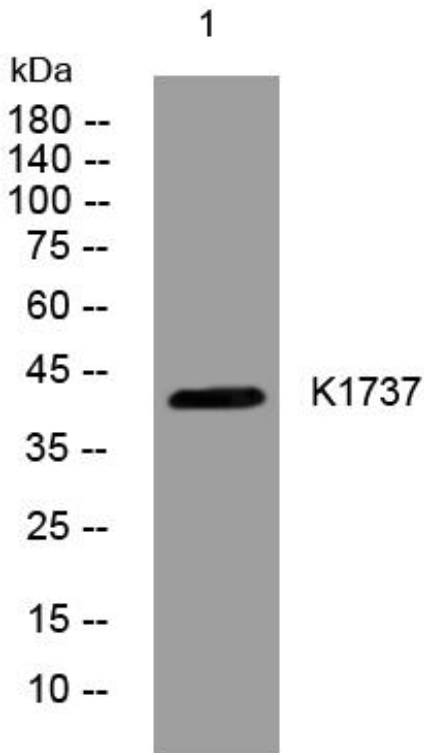
监督电话: 15950492658



### Usage suggestions

This product can be used in immunological reaction related experiments. For more information, please consult technical personnel.

## Products Images



Western Blot analysis of various cells using K1737 mouse mAb

Nanjing BYabs science technology Co.,Ltd

网址: [www.njbybio.com](http://www.njbybio.com)

官方热线: 025-5229-8998

监督电话: 15950492658