



KRA46 mouse mAb

Catalog No	BYmab-08946
Isotype	IgG
Reactivity	Human;Rat;Mouse;
Applications	WB
Gene Name	KRTAP4-6 KAP4.15 KRTAP4-15 KRTAP4.15 KRTAP4.6
Protein Name	KRA46
Immunogen	Synthesized peptide derived from human KRA46 AA range: 43-93
Specificity	This antibody detects endogenous levels of KRA46 at Human
Formulation	Liquid in PBS containing 50% glycerol, 0.5% BSA and 0.02% sodium azide.
Source	Monoclonal, Mouse,IgG
Purification	The antibody was affinity-purified from mouse antiserum by affinity-chromatography using epitope-specific immunogen.
Dilution	WB 1:500-2000
Concentration	1 mg/ml
Purity	≥90%
Storage Stability	-20°C/1 year
Synonyms	
Observed Band	
Cell Pathway	keratin filament,
Tissue Specificity	Expressed in the hair follicles.
Function	caution:Could be the product of a pseudogene.,caution:The sequence shown here is derived from an Ensembl automatic analysis pipeline and should be considered as preliminary data.,function:In the hair cortex, hair keratin intermediate filaments are embedded in an interfilamentous matrix, consisting of hair keratin-associated proteins (KRTAP), which are essential for the formation of a rigid and resistant hair shaft through their extensive disulfide bond cross-linking with abundant cysteine residues of hair keratins. The matrix proteins include the high-sulfur and high-glycine-tyrosine keratins.,sequence caution:Wrong choice of frame.,similarity:Belongs to the KRTAP type 4 family.,subunit:Interacts with hair keratins.,

Nanjing BYabscience technology Co.,Ltd

网址: www.njbybio.com

官方热线: 025-5229-8998

监督电话: 15950492658



Background

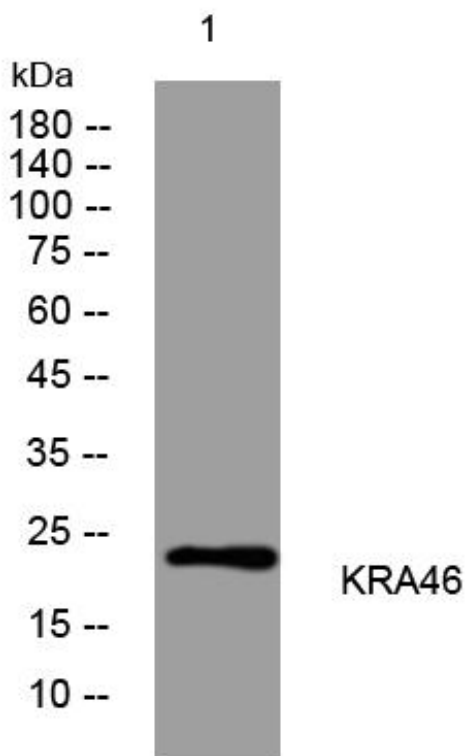
matters needing attention

Avoid repeated freezing and thawing!

Usage suggestions

This product can be used in immunological reaction related experiments. For more information, please consult technical personnel.

Products Images



Western Blot analysis of various cells using KRA46 mouse mAb