



# NIPA2 mouse mAb

<b>Catalog No</b>	BYmab-08945
<b>Isotype</b>	IgG
<b>Reactivity</b>	Human; Mouse
<b>Applications</b>	WB
<b>Gene Name</b>	NIPA2
<b>Protein Name</b>	NIPA2
<b>Immunogen</b>	Synthesized peptide derived from human NIPA2 AA range: 175-225
<b>Specificity</b>	This antibody detects endogenous levels of NIPA2 at Human/Mouse
<b>Formulation</b>	Liquid in PBS containing 50% glycerol, 0.5% BSA and 0.02% sodium azide.
<b>Source</b>	Monoclonal, Mouse,IgG
<b>Purification</b>	The antibody was affinity-purified from mouse antiserum by affinity-chromatography using epitope-specific immunogen.
<b>Dilution</b>	WB 1:500-2000
<b>Concentration</b>	1 mg/ml
<b>Purity</b>	≥90%
<b>Storage Stability</b>	-20°C/1 year
<b>Synonyms</b>	
<b>Observed Band</b>	
<b>Cell Pathway</b>	Cell membrane ; Multi-pass membrane protein . Early endosome . Recruited to the cell membrane in response to low extracellular magnesium. .
<b>Tissue Specificity</b>	Widely expressed.
<b>Function</b>	similarity:Belongs to the NIPA family.,tissue specificity:Widely expressed.,
<b>Background</b>	This gene encodes a possible magnesium transporter. This gene is located adjacent to the imprinted domain in the Prader-Willi syndrome deletion region of chromosome 15. Alternate splicing results in multiple transcript variants. Pseudogenes of this gene are found on chromosomes 3, 7 and 21.[provided by RefSeq, May 2010],
<b>matters needing attention</b>	Avoid repeated freezing and thawing!

**Nanjing BYabscience technology Co.,Ltd**

网址: [www.njbybio.com](http://www.njbybio.com)

官方热线: 025-5229-8998

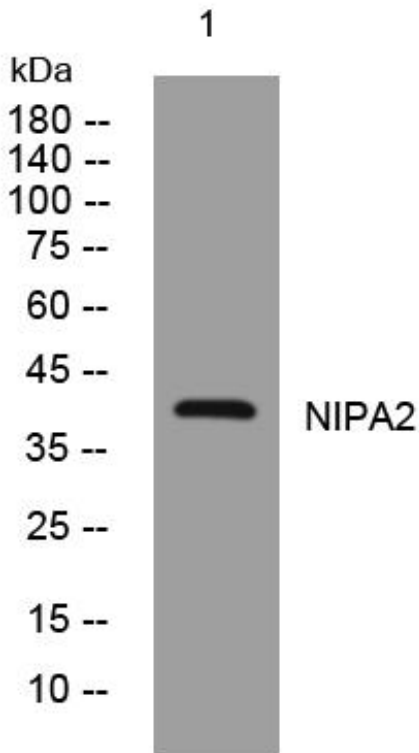
监督电话: 15950492658



### Usage suggestions

This product can be used in immunological reaction related experiments. For more information, please consult technical personnel.

## Products Images



Western Blot analysis of various cells using NIPA2 mouse mAb

Nanjing BYabs science technology Co.,Ltd

网址: [www.njbybio.com](http://www.njbybio.com)

官方热线: 025-5229-8998

监督电话: 15950492658