



# TMX1 mouse mAb

<b>Catalog No</b>	BYmab-08944
<b>Isotype</b>	IgG
<b>Reactivity</b>	Human; Mouse
<b>Applications</b>	WB
<b>Gene Name</b>	TMX1 TMX TXNDC TXNDC1 PSEC0085 UNQ235/PRO268
<b>Protein Name</b>	TMX1
<b>Immunogen</b>	Synthesized peptide derived from human TMX1 AA range: 223-273
<b>Specificity</b>	This antibody detects endogenous levels of TMX1 at Human/Mouse
<b>Formulation</b>	Liquid in PBS containing 50% glycerol, 0.5% BSA and 0.02% sodium azide.
<b>Source</b>	Monoclonal, Mouse,IgG
<b>Purification</b>	The antibody was affinity-purified from mouse antiserum by affinity-chromatography using epitope-specific immunogen.
<b>Dilution</b>	WB 1:500-2000
<b>Concentration</b>	1 mg/ml
<b>Purity</b>	≥90%
<b>Storage Stability</b>	-20°C/1 year
<b>Synonyms</b>	
<b>Observed Band</b>	
<b>Cell Pathway</b>	Membrane ; Single-pass type I membrane protein . Endoplasmic reticulum membrane ; Single-pass type I membrane protein . Predominantly found in the endoplasmic reticulum. .
<b>Tissue Specificity</b>	Ubiquitous. Highly expressed in kidney, liver, placenta and lung.
<b>Function</b>	function:May participate in various redox reactions through the reversible oxidation of its active center dithiol to a disulfide and catalyze dithiol-disulfide exchange reactions.,similarity:Contains 1 thioredoxin domain.,subcellular location:Predominantly found in the endoplasmic reticulum.,tissue specificity:Ubiquitous. Highly expressed in kidney, liver, placenta and lung.,
<b>Background</b>	TXNDC1 is a thioredoxin (TXN; see MIM 187700)-related protein with disulfide reductase activity (Matsuo et al., 2001 [PubMed 11152479]).[supplied by OMIM, Mar 2008],

**Nanjing BYabscience technology Co.,Ltd**

网址: [www.njbybio.com](http://www.njbybio.com)

官方热线: 025-5229-8998

监督电话: 15950492658



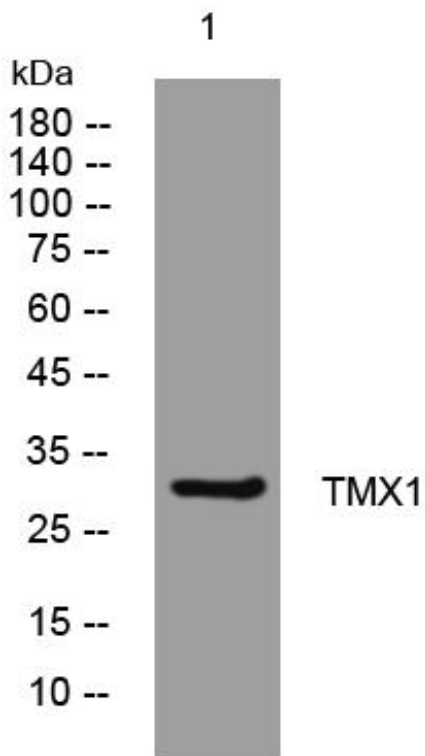
**matters needing attention**

Avoid repeated freezing and thawing!

**Usage suggestions**

This product can be used in immunological reaction related experiments. For more information, please consult technical personnel.

## Products Images



Western Blot analysis of various cells using TMX1 mouse mAb