



PA1 mouse mAb

Catalog No	BYmab-08939
Isotype	IgG
Reactivity	Human;Rat;Mouse;
Applications	WB
Gene Name	PA1 C16orf53
Protein Name	PA1
Immunogen	Synthesized peptide derived from human PA1 AA range: 163-213
Specificity	This antibody detects endogenous levels of PA1 at Human
Formulation	Liquid in PBS containing 50% glycerol, 0.5% BSA and 0.02% sodium azide.
Source	Monoclonal, Mouse,IgG
Purification	The antibody was affinity-purified from mouse antiserum by affinity-chromatography using epitope-specific immunogen.
Dilution	WB 1:500-2000
Concentration	1 mg/ml
Purity	≥90%
Storage Stability	-20°C/1 year
Synonyms	
Observed Band	
Cell Pathway	Nucleus .
Tissue Specificity	Ubiquitously expressed.
Function	subunit:Interacts with PAXIP1/PTIP; the interaction is direct and is required for the association with the rest of the PTIP complex. Component of the MLL3/MLL4 complex at least composed of MLL3, MLL4, ASH2L, RBBP5, DPY30, WDR5, NCOA6, KDM6A, PAXIP1/PTIP and C16orf53/PA1.,
Background	C16ORF53 (PA1) is a component of a Set1-like multiprotein histone methyltransferase complex (Cho et al., 2007 [PubMed 17500065]).[supplied by OMIM, May 2008],
matters needing attention	Avoid repeated freezing and thawing!

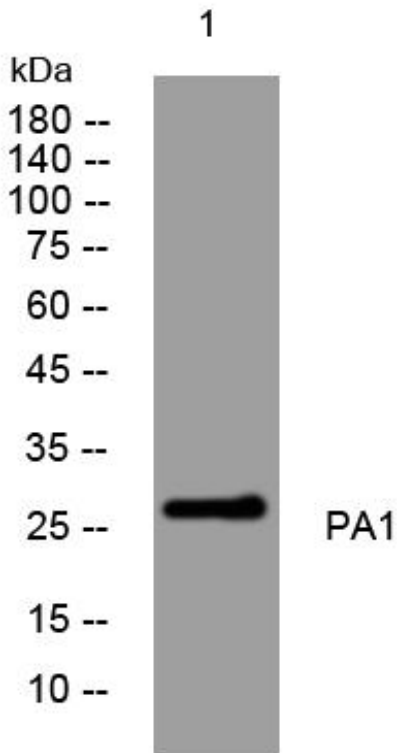
Nanjing BYabscience technology Co.,Ltd



Usage suggestions

This product can be used in immunological reaction related experiments. For more information, please consult technical personnel.

Products Images



Western Blot analysis of various cells using PA1 mouse mAb

Nanjing BYabs science technology Co.,Ltd

网址: www.njbybio.com

官方热线: 025-5229-8998

监督电话: 15950492658