



EHBP1 mouse mAb

Catalog No	BYmab-08938
Isotype	IgG
Reactivity	Human; Mouse
Applications	WB
Gene Name	EHBP1 KIAA0903 NACSIN
Protein Name	EHBP1
Immunogen	Synthesized peptide derived from human EHBP1 AA range: 364-414
Specificity	This antibody detects endogenous levels of EHBP1 at Human/Mouse
Formulation	Liquid in PBS containing 50% glycerol, 0.5% BSA and 0.02% sodium azide.
Source	Monoclonal, Mouse,IgG
Purification	The antibody was affinity-purified from mouse antiserum by affinity-chromatography using epitope-specific immunogen.
Dilution	WB 1:500-2000
Concentration	1 mg/ml
Purity	≥90%
Storage Stability	-20°C/1 year
Synonyms	
Observed Band	
Cell Pathway	Cytoplasm . Membrane . Endosome . Mostly found in cytosol and plasma membrane.
Tissue Specificity	
Function	disease:A genetic variation in EHBP1 is associated with susceptibility to hereditary prostate cancer type 12 (HPC12) [MIM:611868].,function:May play a role in actin reorganization. Links clathrin-mediated endocytosis to the actin cytoskeleton.,sequence caution:Contaminating sequence. Potential poly-A sequence.,similarity:Contains 1 CH (calponin-homology) domain.,subcellular location:Mostly found in cytosol and plasma membrane.,subunit:Interacts with EHD2.,
Background	This gene encodes an Eps15 homology domain binding protein. The encoded protein may play a role in endocytic trafficking. A single nucleotide polymorphism in this gene is associated with an aggressive form of prostate cancer. Alternate splicing results in multiple transcript variants. [provided by RefSeq, Feb 2010],

Nanjing BYabscience technology Co.,Ltd



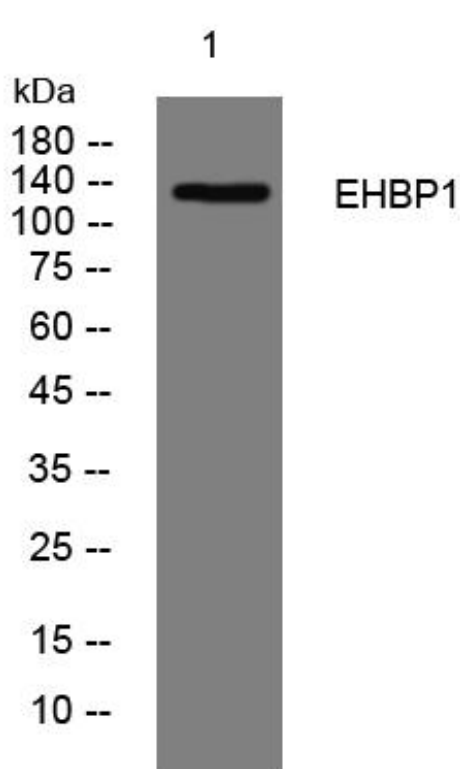
matters needing attention

Avoid repeated freezing and thawing!

Usage suggestions

This product can be used in immunological reaction related experiments. For more information, please consult technical personnel.

Products Images



Western Blot analysis of various cells using EHBP1 mouse mAb