



# SRPX mouse mAb

Catalog No	BYmab-08937
Isotype	IgG
Reactivity	Human; Mouse;Rat
Applications	WB
Gene Name	SRPX ETX1
Protein Name	SRPX
Immunogen	Synthesized peptide derived from human SRPX AA range: 234-284
Specificity	This antibody detects endogenous levels of SRPX at Human/Mouse/Rat
Formulation	Liquid in PBS containing 50% glycerol, 0.5% BSA and 0.02% sodium azide.
Source	Monoclonal, Mouse,IgG
Purification	The antibody was affinity-purified from mouse antiserum by affinity-chromatography using epitope-specific immunogen.
Dilution	WB 1:500-2000
Concentration	1 mg/ml
Purity	≥90%
Storage Stability	-20°C/1 year
Synonyms	
Observed Band	
Cell Pathway	Cell surface . Possibly surface of photoreceptor cell.
Tissue Specificity	Retina and heart; less in placenta, pancreas, lung, liver, skeletal muscle, kidney and brain.
Function	alternative products:Additional isoforms seem to exist,function:May be involved in phagocytosis during disk shedding, cell adhesion to cells other than the pigment epithelium or signal transduction.,similarity:Contains 1 HYR domain.,similarity:Contains 3 Sushi (CCP/SCR) domains.,subcellular location:Possibly surface of photoreceptor cell.,tissue specificity:Retina and heart; less in placenta, pancreas, lung, liver, skeletal muscle, kidney and brain.,
Background	
matters needing attention	Avoid repeated freezing and thawing!

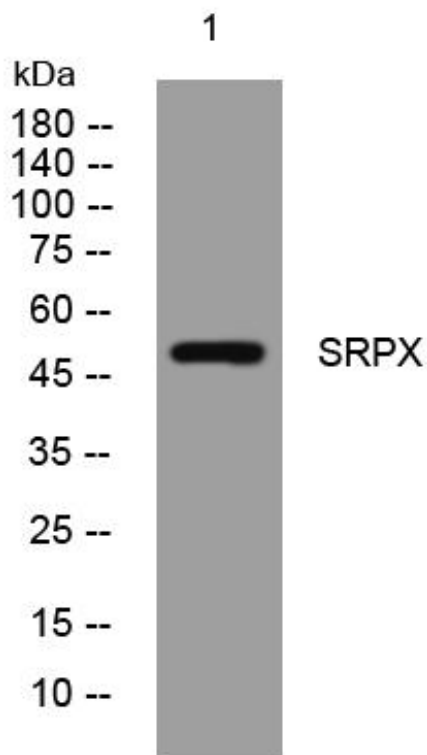
Nanjing BYabscience technology Co.,Ltd



### Usage suggestions

This product can be used in immunological reaction related experiments. For more information, please consult technical personnel.

## Products Images



Western Blot analysis of various cells using SRPX mouse mAb

Nanjing BYabs science technology Co.,Ltd

网址: [www.njbybio.com](http://www.njbybio.com)

官方热线: 025-5229-8998

监督电话: 15950492658