



ROP1B mouse mAb

Catalog No	BYmab-08934
Isotype	IgG
Reactivity	Human;Rat;Mouse;
Applications	WB
Gene Name	ROPN1B
Protein Name	ROP1B
Immunogen	Synthesized peptide derived from human ROP1B AA range: 94-144
Specificity	This antibody detects endogenous levels of ROP1B at Human
Formulation	Liquid in PBS containing 50% glycerol, 0.5% BSA and 0.02% sodium azide.
Source	Monoclonal, Mouse,IgG
Purification	The antibody was affinity-purified from mouse antiserum by affinity-chromatography using epitope-specific immunogen.
Dilution	WB 1:500-2000
Concentration	1 mg/ml
Purity	≥90%
Storage Stability	-20°C/1 year
Synonyms	
Observed Band	
Cell Pathway	Cell projection, cilium, flagellum . In the sperm tail, found in the principal piece and in the cytoplasmic droplet located at the distal end of the midpiece. Inner surface of the fibrous sheath. .
Tissue Specificity	
Function	domain:The RIIa domain mediates interaction with AKAP3.,miscellaneous:The name 'ropporin' comes from the Japanese word 'oppo' which means 'tail'. ,similarity:Belongs to the ropporin family.,similarity:Contains 1 RIIa domain.,subcellular location:In the sperm tail, found in the principal piece and in the cytoplasmic droplet located at the distal end of the midpiece. Inner surface of the fibrous sheath.,subunit:Homodimer. Interacts with RHPN1. May interact with SPA17 (By similarity). Interacts with AKAP3.,
Background	

Nanjing BYabscience technology Co.,Ltd

网址: www.njbybio.com

官方热线: 025-5229-8998

监督电话: 15950492658



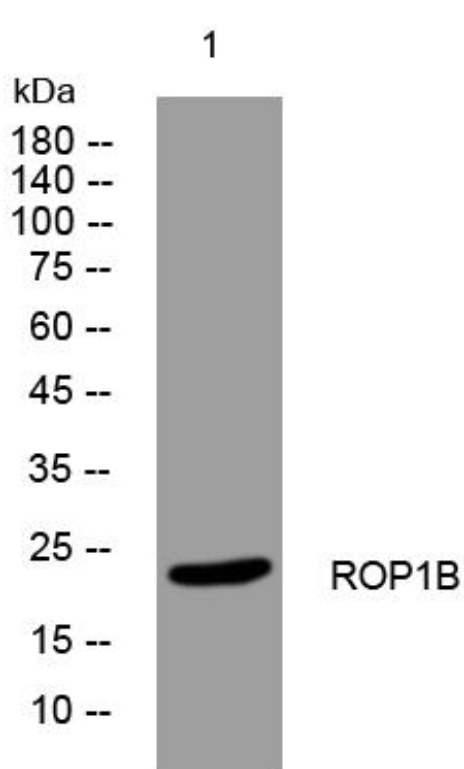
matters needing attention

Avoid repeated freezing and thawing!

Usage suggestions

This product can be used in immunological reaction related experiments. For more information, please consult technical personnel.

Products Images



Western Blot analysis of various cells using ROP1B mouse mAb

Nanjing BYabs science technology Co.,Ltd

网址: www.njbybio.com

官方热线: 025-5229-8998

监督电话: 15950492658