



TTL13 mouse mAb

Catalog No	BYmab-08918
Isotype	IgG
Reactivity	Human; Mouse
Applications	WB
Gene Name	TTL13
Protein Name	TTL13
Immunogen	Synthesized peptide derived from human TTL13 AA range: 423-473
Specificity	This antibody detects endogenous levels of TTL13 at Human/Mouse
Formulation	Liquid in PBS containing 50% glycerol, 0.5% BSA and 0.02% sodium azide.
Source	Monoclonal, Mouse,IgG
Purification	The antibody was affinity-purified from mouse antiserum by affinity-chromatography using epitope-specific immunogen.
Dilution	WB 1:500-2000
Concentration	1 mg/ml
Purity	≥90%
Storage Stability	-20°C/1 year
Synonyms	
Observed Band	
Cell Pathway	microtubule,
Tissue Specificity	
Function	function:Polyglutamylase which preferentially modifies alpha-tubulin. Involved in the side-chain elongation step of the polyglutamylation reaction rather than in the initiation step.,similarity:Belongs to the tubulin--tyrosine ligase family.,similarity:Contains 1 TTL domain.,
Background	
matters needing attention	Avoid repeated freezing and thawing!

Nanjing BYabscience technology Co.,Ltd

网址: www.njbybio.com

官方热线: 025-5229-8998

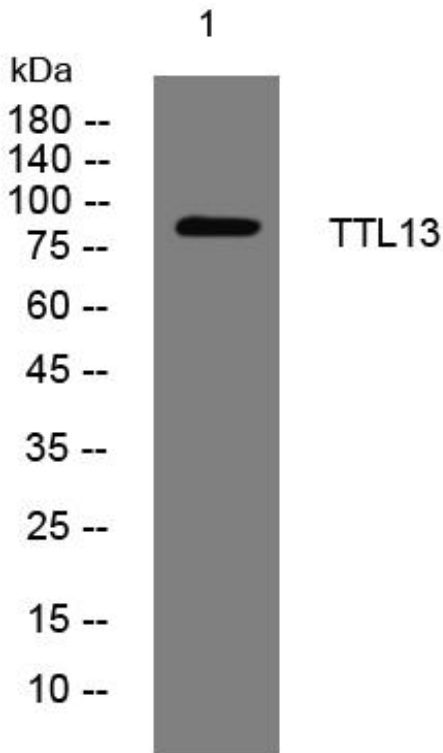
监督电话: 15950492658



Usage suggestions

This product can be used in immunological reaction related experiments. For more information, please consult technical personnel.

Products Images



Western Blot analysis of various cells using TTL13 mouse mAb

Nanjing BYabs science technology Co.,Ltd

网址: www.njbybio.com

官方热线: 025-5229-8998

监督电话: 15950492658