



ADAM2 mouse mAb

Catalog No	BYmab-08910
Isotype	IgG
Reactivity	Human; Mouse;Rat
Applications	WB
Gene Name	ADAM2 FTNB
Protein Name	ADAM2
Immunogen	Synthesized peptide derived from human ADAM2 AA range: 109-159
Specificity	This antibody detects endogenous levels of ADAM2 at Human/Mouse/Rat
Formulation	Liquid in PBS containing 50% glycerol, 0.5% BSA and 0.02% sodium azide.
Source	Monoclonal, Mouse,IgG
Purification	The antibody was affinity-purified from mouse antiserum by affinity-chromatography using epitope-specific immunogen.
Dilution	WB 1:500-2000
Concentration	1 mg/ml
Purity	≥90%
Storage Stability	-20°C/1 year
Synonyms	
Observed Band	
Cell Pathway	Membrane; Single-pass type I membrane protein.
Tissue Specificity	Expressed specifically in spermatogenic cells in the seminiferous cells. Not detected in fetal tissues.
Function	domain:A tripeptide motif (FEE) within disintegrin-like domain could be involved in the binding to egg integrin receptor and thus could mediate sperm/egg binding.,function:Sperm surface membrane protein that may be involved in sperm-egg plasma membrane adhesion and fusion during fertilization. Could have a direct role in sperm-zona binding or migration of sperm from the uterus into the oviduct. Interactions with egg membrane could be mediated via binding between its disintegrin-like domain to one or more integrins receptors on the egg. This is a non catalytic metalloprotease-like protein.,miscellaneous:In mammals, exists as a heterodimer composed of an alpha and beta subunits. In human, fertilin subunit alpha is a pseudogene.,PTM:The prodomain and the metalloprotease domain are cleaved during the epididymal maturation of the spermatozoa.,similarity:Contains 1 disintegrin domain.,similari

Nanjing BYabscience technology Co.,Ltd



Background

This gene encodes a member of the ADAM (a disintegrin and metalloprotease domain) family. Members of this family are membrane-anchored proteins structurally related to snake venom disintegrins, and have been implicated in a variety of biological processes involving cell-cell and cell-matrix interactions, including fertilization, muscle development, and neurogenesis. The encoded protein is a subunit of an integral sperm membrane glycoprotein called fertilin, which plays an important role in sperm-egg interactions. Alternative splicing results in multiple transcript variants encoding different isoforms. [provided by RefSeq, May 2013],

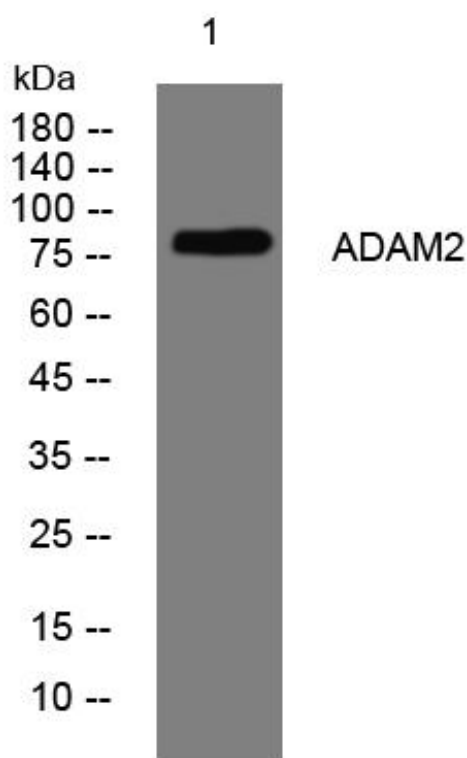
matters needing attention

Avoid repeated freezing and thawing!

Usage suggestions

This product can be used in immunological reaction related experiments. For more information, please consult technical personnel.

Products Images



Western Blot analysis of various cells using ADAM2 mouse mAb