



S61A2 mouse mAb

Catalog No	BYmab-08902
Isotype	IgG
Reactivity	Human; Mouse
Applications	WB
Gene Name	SEC61A2
Protein Name	S61A2
Immunogen	Synthesized peptide derived from human S61A2 AA range: 318-368
Specificity	This antibody detects endogenous levels of S61A2 at Human/Mouse
Formulation	Liquid in PBS containing 50% glycerol, 0.5% BSA and 0.02% sodium azide.
Source	Monoclonal, Mouse,IgG
Purification	The antibody was affinity-purified from mouse antiserum by affinity-chromatography using epitope-specific immunogen.
Dilution	WB 1:500-2000
Concentration	1 mg/ml
Purity	≥90%
Storage Stability	-20°C/1 year
Synonyms	
Observed Band	
Cell Pathway	Endoplasmic reticulum membrane ; Multi-pass membrane protein .
Tissue Specificity	
Function	function:Appears to play a crucial role in the insertion of secretory and membrane polypeptides into the ER. It is required for assembly of membrane and secretory proteins. Found to be tightly associated with membrane-bound ribosomes, either directly or through adaptor proteins.,similarity:Belongs to the secY/SEC61-alpha family.,subunit:Heterotrimeric complex composed of SEC61-alpha, SEC61-beta and SEC61-gamma.,
Background	The protein encoded by this gene has similarity to a mouse protein which suggests a role in the insertion of secretory and membrane polypeptides into the endoplasmic reticulum. It may also be required for the assembly of membrane and secretory proteins. Alternative splicing results in multiple transcript variants. [provided by RefSeq, Dec 2008],

Nanjing BYabscience technology Co.,Ltd



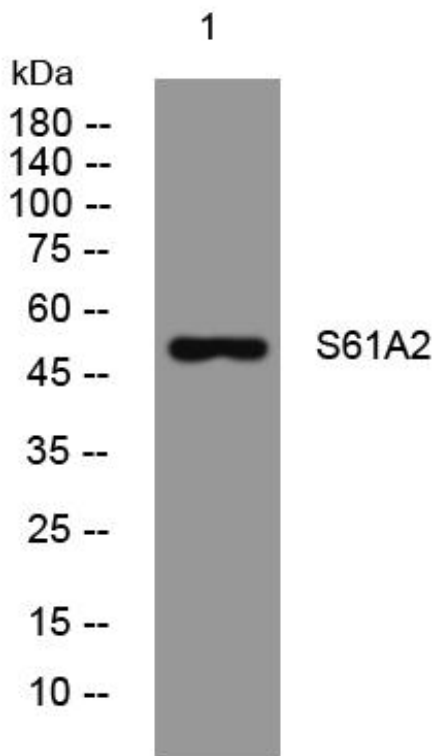
matters needing attention

Avoid repeated freezing and thawing!

Usage suggestions

This product can be used in immunological reaction related experiments. For more information, please consult technical personnel.

Products Images



Western Blot analysis of various cells using S61A2 mouse mAb