



# GTR10 mouse mAb

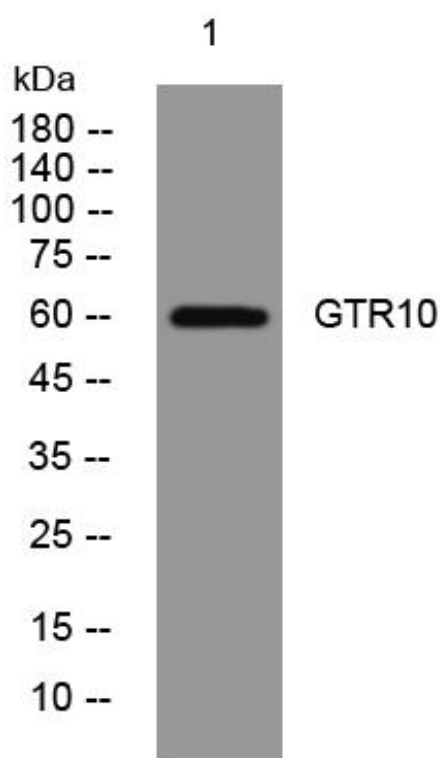
<b>Catalog No</b>	BYmab-08896
<b>Isotype</b>	IgG
<b>Reactivity</b>	Human; Mouse
<b>Applications</b>	WB
<b>Gene Name</b>	SLC2A10 GLUT10
<b>Protein Name</b>	GTR10
<b>Immunogen</b>	Synthesized peptide derived from human GTR10 AA range: 233-283
<b>Specificity</b>	This antibody detects endogenous levels of GTR10 at Human/Mouse
<b>Formulation</b>	Liquid in PBS containing 50% glycerol, 0.5% BSA and 0.02% sodium azide.
<b>Source</b>	Monoclonal, Mouse,IgG
<b>Purification</b>	The antibody was affinity-purified from mouse antiserum by affinity-chromatography using epitope-specific immunogen.
<b>Dilution</b>	WB 1:500-2000
<b>Concentration</b>	1 mg/ml
<b>Purity</b>	≥90%
<b>Storage Stability</b>	-20°C/1 year
<b>Synonyms</b>	
<b>Observed Band</b>	60kD
<b>Cell Pathway</b>	Endomembrane system ; Multi-pass membrane protein . Cytoplasm, perinuclear region .
<b>Tissue Specificity</b>	Widely expressed; highest levels in liver and pancreas.
<b>Function</b>	disease:Defects in SLC2A10 are the cause of arterial tortuosity syndrome (ATS) [MIM:208050]. ATS is an autosomal recessive disorder characterized by tortuosity and elongation of major arteries, often resulting in death at young age. Other typical features include aneurysms of large arteries and stenosis of the pulmonary artery, in association with facial features and several connective tissue manifestations such as soft skin and joint laxity. Histopathological findings include fragmentation of elastic fibers in the tunica media of large arteries.,function:Facilitative glucose transporter.,similarity:Belongs to the major facilitator superfamily. Sugar transporter (TC 2.A.1.1) family. Glucose transporter subfamily.,tissue specificity:Widely expressed; highest levels in liver and pancreas.,

**Nanjing BYabscience technology Co.,Ltd**



<b>Background</b>	This gene encodes a member of the class III facilitative glucose transporter family. The encoded protein plays a role in regulation of glucose homeostasis. Mutations in this gene have been associated with arterial tortuosity syndrome.[provided by RefSeq, Dec 2009],
<b>matters needing attention</b>	Avoid repeated freezing and thawing!
<b>Usage suggestions</b>	This product can be used in immunological reaction related experiments. For more information, please consult technical personnel.

## Products Images



Western Blot analysis of various cells using GTR10 mouse mAb