



# WSB2 mouse mAb

<b>Catalog No</b>	BYmab-08886
<b>Isotype</b>	IgG
<b>Reactivity</b>	Human; Mouse
<b>Applications</b>	WB
<b>Gene Name</b>	WSB2
<b>Protein Name</b>	WSB2
<b>Immunogen</b>	Synthesized peptide derived from human WSB2 AA range: 248-298
<b>Specificity</b>	This antibody detects endogenous levels of WSB2 at Human/Mouse
<b>Formulation</b>	Liquid in PBS containing 50% glycerol, 0.5% BSA and 0.02% sodium azide.
<b>Source</b>	Monoclonal, Mouse,IgG
<b>Purification</b>	The antibody was affinity-purified from mouse antiserum by affinity-chromatography using epitope-specific immunogen.
<b>Dilution</b>	WB 1:500-2000
<b>Concentration</b>	1 mg/ml
<b>Purity</b>	≥90%
<b>Storage Stability</b>	-20°C/1 year
<b>Synonyms</b>	
<b>Observed Band</b>	44kD
<b>Cell Pathway</b>	intracellular,
<b>Tissue Specificity</b>	
<b>Function</b>	domain:The SOCS box domain mediates the interaction with the Elongin BC complex, an adapter module in different E3 ubiquitin ligase complexes.,function:May be a substrate-recognition component of a SCF-like ECS (Elongin-Cullin-SOCS-box protein) E3 ubiquitin ligase complex which mediates the ubiquitination and subsequent proteasomal degradation of target proteins.,pathway:Protein modification; protein ubiquitination.,similarity:Contains 1 SOCS box domain.,similarity:Contains 5 WD repeats.,
<b>Background</b>	This gene encodes a member of the WD-protein subfamily. The encoded protein contains five WD-repeats spanning most of the protein and an SOCS box in the C-terminus. The SOCS box may act as a bridge between specific substrate-binding domains and E3 ubiquitin protein ligases. Three transcript

**Nanjing BYabscience technology Co.,Ltd**



variants encoding different isoforms have been found for this gene. [provided by RefSeq, Jun 2013],

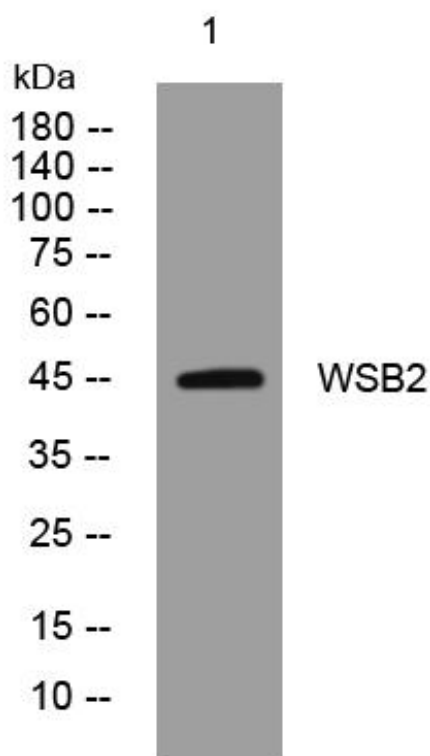
**matters needing attention**

Avoid repeated freezing and thawing!

**Usage suggestions**

This product can be used in immunological reaction related experiments. For more information, please consult technical personnel.

## Products Images



Western Blot analysis of various cells using WSB2 mouse mAb