



# CCDC6 mouse mAb

<b>Catalog No</b>	BYmab-08885
<b>Isotype</b>	IgG
<b>Reactivity</b>	Human; Mouse
<b>Applications</b>	WB
<b>Gene Name</b>	CCDC6 D10S170 TST1
<b>Protein Name</b>	CCDC6
<b>Immunogen</b>	Synthesized peptide derived from human CCDC6 AA range: 104-154
<b>Specificity</b>	This antibody detects endogenous levels of CCDC6 at Human/Mouse
<b>Formulation</b>	Liquid in PBS containing 50% glycerol, 0.5% BSA and 0.02% sodium azide.
<b>Source</b>	Monoclonal, Mouse,IgG
<b>Purification</b>	The antibody was affinity-purified from mouse antiserum by affinity-chromatography using epitope-specific immunogen.
<b>Dilution</b>	WB 1:500-2000
<b>Concentration</b>	1 mg/ml
<b>Purity</b>	≥90%
<b>Storage Stability</b>	-20°C/1 year
<b>Synonyms</b>	
<b>Observed Band</b>	
<b>Cell Pathway</b>	Cytoplasm. Cytoplasm, cytoskeleton . May be a cytoskeletal protein.
<b>Tissue Specificity</b>	Ubiquitously expressed.
<b>Function</b>	disease:A chromosomal aberration involving CCDC6 is a cause of thyroid papillary carcinoma (PACT) [MIM:188550]. Inversion inv(10)(q11.2;q21) generates the RET/CCDC6 (PTC1) oncogene.,domain:The protein has mostly an alpha helical conformation similar to myosin heavy-chain tail that might adopt a coiled-coil conformation.,subcellular location:May be a cytoskeletal protein.,tissue specificity:Ubiquitously expressed.,
<b>Background</b>	This gene encodes a coiled-coil domain-containing protein. The encoded protein is ubiquitously expressed and may function as a tumor suppressor. A chromosomal rearrangement resulting in the expression of a fusion gene containing a portion of this gene and the intracellular kinase-encoding domain of the ret proto-oncogene is the cause of thyroid papillary carcinoma.[provided by

**Nanjing BYabscience technology Co.,Ltd**



RefSeq, Sep 2010],

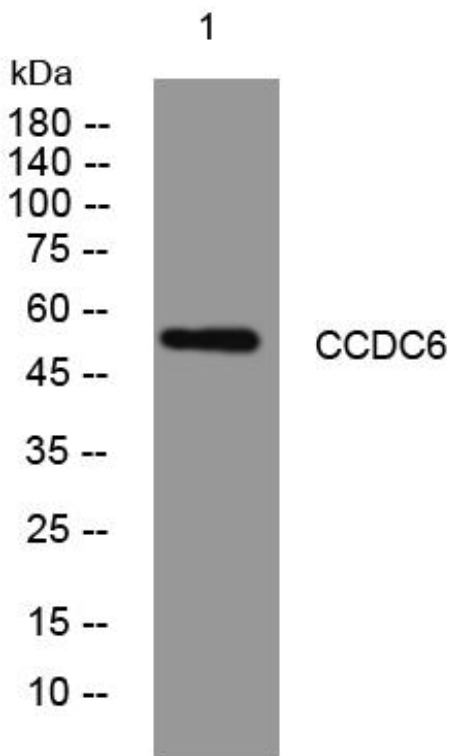
**matters needing attention**

Avoid repeated freezing and thawing!

**Usage suggestions**

This product can be used in immunological reaction related experiments. For more information, please consult technical personnel.

## Products Images



Western Blot analysis of various cells using CCDC6 mouse mAb

Nanjing BYabscience technology Co.,Ltd

网址: [www.njbybio.com](http://www.njbybio.com)

官方热线: 025-5229-8998

监督电话: 15950492658