



# AEBP2 mouse mAb

<b>Catalog No</b>	BYmab-08875
<b>Isotype</b>	IgG
<b>Reactivity</b>	Human; Mouse
<b>Applications</b>	WB
<b>Gene Name</b>	AEBP2
<b>Protein Name</b>	AEBP2
<b>Immunogen</b>	Synthesized peptide derived from human AEBP2 AA range: 155-205
<b>Specificity</b>	This antibody detects endogenous levels of AEBP2 at Human/Mouse
<b>Formulation</b>	Liquid in PBS containing 50% glycerol, 0.5% BSA and 0.02% sodium azide.
<b>Source</b>	Monoclonal, Mouse,IgG
<b>Purification</b>	The antibody was affinity-purified from mouse antiserum by affinity-chromatography using epitope-specific immunogen.
<b>Dilution</b>	WB 1:500-2000
<b>Concentration</b>	1 mg/ml
<b>Purity</b>	≥90%
<b>Storage Stability</b>	-20°C/1 year
<b>Synonyms</b>	
<b>Observed Band</b>	
<b>Cell Pathway</b>	Nucleus . Localizes to chromatin as part of the PRC2 complex. .
<b>Tissue Specificity</b>	
<b>Function</b>	function:DNA-binding transcriptional repressor. May interact with and stimulate the activity of the PRC2 complex, which methylates 'Lys-9' and 'Lys-27' residues of histone H3.,sequence caution:Translated as Gln.,similarity:Belongs to the AEBP2/jing C2H2-type zinc-finger family.,similarity:Contains 3 C2H2-type zinc fingers.,subunit:Self-associates. Interacts with EED, EZH2, RBBP4 and SUZ12. Component of the PRC2/EED-EZH1 complex, which includes EED, EZH1, SUZ12, RBBP4 and AEBP2 (By similarity). May also interact with RBBP7.,
<b>Background</b>	

Nanjing BYabscience technology Co.,Ltd



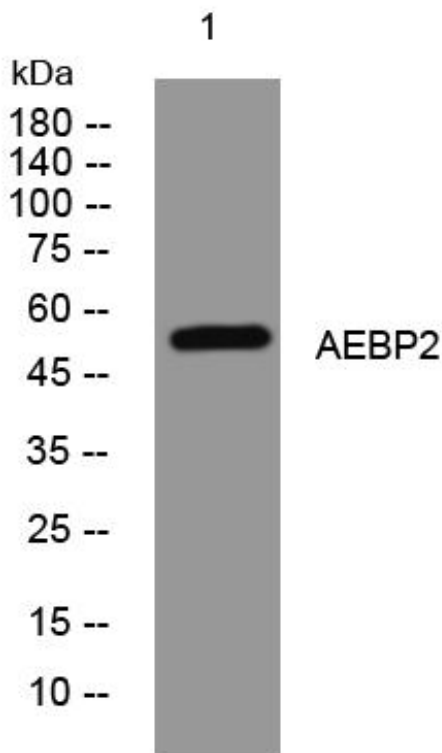
**matters needing attention**

Avoid repeated freezing and thawing!

**Usage suggestions**

This product can be used in immunological reaction related experiments. For more information, please consult technical personnel.

## Products Images



Western Blot analysis of various cells using AEBP2 mouse mAb

Nanjing BYabscience technology Co.,Ltd

网址: [www.njbybio.com](http://www.njbybio.com)

官方热线: 025-5229-8998

监督电话: 15950492658