



CSDC2 mouse mAb

Catalog No	BYmab-08853
Isotype	IgG
Reactivity	Human; Mouse;Rat
Applications	WB
Gene Name	CSDC2 PIPPIN
Protein Name	CSDC2
Immunogen	Synthesized peptide derived from human CSDC2 AA range: 88-138
Specificity	This antibody detects endogenous levels of CSDC2 at Human/Mouse/Rat
Formulation	Liquid in PBS containing 50% glycerol, 0.5% BSA and 0.02% sodium azide.
Source	Monoclonal, Mouse,IgG
Purification	The antibody was affinity-purified from mouse antiserum by affinity-chromatography using epitope-specific immunogen.
Dilution	WB 1:500-2000
Concentration	1 mg/ml
Purity	≥90%
Storage Stability	-20°C/1 year
Synonyms	
Observed Band	
Cell Pathway	Nucleus . Cytoplasm . PIPPin-RNA complexes are located to the nucleus. .
Tissue Specificity	
Function	function:RNA-binding factor which binds specifically to the very 3'-UTR ends of both histone H1 and H3.3 mRNAs, encompassing the polyadenylation signal. Might play a central role in the negative regulation of histone variant synthesis in the developing brain.;similarity:Contains 1 CSD (cold-shock) domain.;subcellular location:PIPPin-RNA complexes are located to the nucleus.,
Background	
matters needing attention	Avoid repeated freezing and thawing!

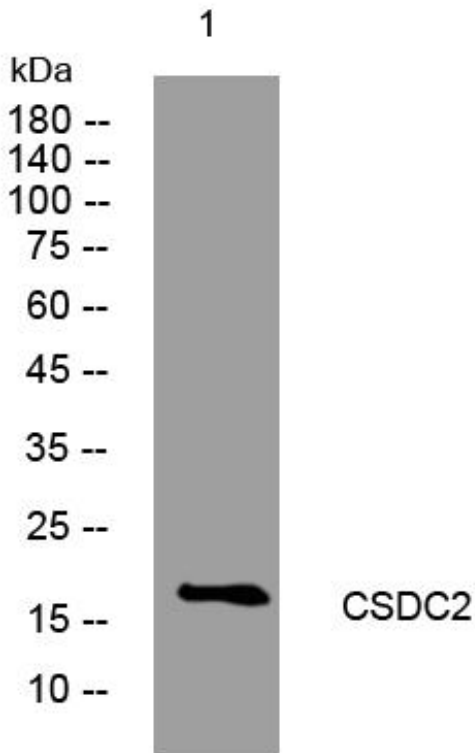
Nanjing BYabscience technology Co.,Ltd



Usage suggestions

This product can be used in immunological reaction related experiments. For more information, please consult technical personnel.

Products Images



Western Blot analysis of various cells using CSDC2 mouse mAb

Nanjing BYabscience technology Co.,Ltd

网址: www.njbybio.com

官方热线: 025-5229-8998

监督电话: 15950492658