



CKAP2 mouse mAb

Catalog No	BYmab-08817
Isotype	IgG
Reactivity	Human; Mouse
Applications	WB
Gene Name	CKAP2 LB1 TMAP
Protein Name	CKAP2
Immunogen	Synthesized peptide derived from human CKAP2 AA range: 298-348
Specificity	This antibody detects endogenous levels of CKAP2 at Human/Mouse
Formulation	Liquid in PBS containing 50% glycerol, 0.5% BSA and 0.02% sodium azide.
Source	Monoclonal, Mouse,IgG
Purification	The antibody was affinity-purified from mouse antiserum by affinity-chromatography using epitope-specific immunogen.
Dilution	WB 1:500-2000
Concentration	1 mg/ml
Purity	≥90%
Storage Stability	-20°C/1 year
Synonyms	
Observed Band	
Cell Pathway	Cytoplasm, cytoskeleton. Cytoplasm, cytoskeleton, spindle. Cytoplasm, cytoskeleton, spindle pole. Contrary to the ectopically expressed protein, endogenous CKAP2 does not colocalize with microtubules in G1, S and early G2. At late G2 and prophase after separation of duplicated centrosomes, colocalizes with gamma-tubulin and centrosome-proximal microtubules. From prometaphase through anaphase B, colocalizes with mitotic spindle poles and spindle microtubules. During cytokinesis, absent from midbody microtubules.
Tissue Specificity	Abundant in testis, thymus, and in tumor derived cell lines, while barely detectable in liver, prostate, and kidney.
Function	developmental stage:Present at the G1/S boundary. Accumulates as cells progress from S to G2 into mitosis. Rapidly degraded during mitosis exit by CDH1-activated anaphase promoting complex/cyclosome (APC/C).,function:Possesses microtubule stabilizing properties. Involved in regulating aneuploidy, cell cycling, and cell death in a p53/TP53-dependent manner.,induction:Up-regulated in primary human gastric cancers.,sequence

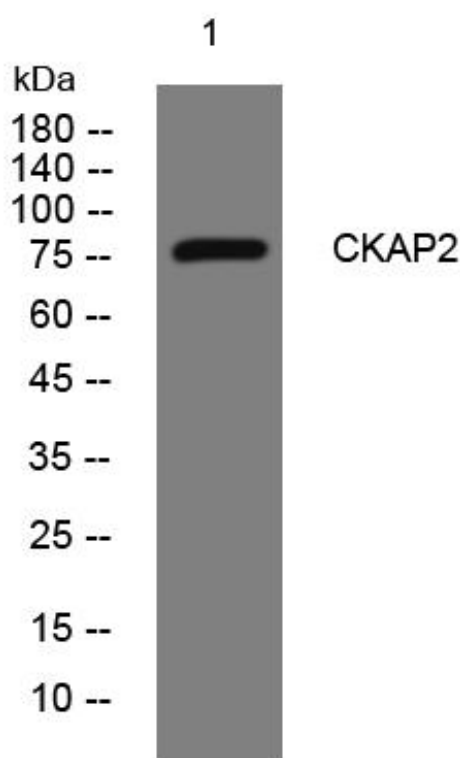
Nanjing BYabscience technology Co.,Ltd



caution:Contaminating sequence. Potential poly-A sequence.,similarity:Belongs to the CKAP2 family.,subcellular location:Contrary to the ectopically expressed protein, endogenous CKAP2 does not colocalize with microtubules in G1, S and early G2. At late G2 and prophase after separation of duplicated centrosomes, colocalizes with gamma-tubulin and centrosome-proximal microtubules. From prometaphase through anaphase B, colocalizes with mitotic spindle poles and spindle micr

Background	This gene encodes a cytoskeleton-associated protein that stabalizes microtubules and plays a role in the regulation of cell division. The encoded protein is itself regulated through phosphorylation at multiple serine and threonine residues. There is a pseudogene of this gene on chromosome 14. Alternative splicing results in multiple transcript variations. [provided by RefSeq, Nov 2013],
matters needing attention	Avoid repeated freezing and thawing!
Usage suggestions	This product can be used in immunological reaction related experiments. For more information, please consult technical personnel.

Products Images



Nanjing BYabs science technology Co.,Ltd

网址: www.njbybio.com

官方热线: 025-5229-8998

监督电话: 15950492658