



PRAP1 mouse mAb

| | |
|--------------------|-----------------------------------------------------------------------------------------------------------------------------------------------------------------------------------------------------------------------------------------------------------------------------------------------------------------------------------------------------------------------------------------------------------------------------------------------------------|
| Catalog No | BYmab-08811 |
| Isotype | IgG |
| Reactivity | Human; Mouse;Rat |
| Applications | WB |
| Gene Name | PRAP1 UPA UNQ608/PRO1195 |
| Protein Name | PRAP1 |
| Immunogen | Synthesized peptide derived from human PRAP1 AA range: 84-134 |
| Specificity | This antibody detects endogenous levels of PRAP1 at Human/Mouse/Rat |
| Formulation | Liquid in PBS containing 50% glycerol, 0.5% BSA and 0.02% sodium azide. |
| Source | Monoclonal, Mouse,IgG |
| Purification | The antibody was affinity-purified from mouse antiserum by affinity-chromatography using epitope-specific immunogen. |
| Dilution | WB 1:500-2000 |
| Concentration | 1 mg/ml |
| Purity | ≥90% |
| Storage Stability | -20°C/1 year |
| Synonyms | |
| Observed Band | |
| Cell Pathway | Secreted . Endoplasmic reticulum . |
| Tissue Specificity | Highly expressed in the intestinal epithelial cells (at protein level) (PubMed:32629119). Abundantly expressed in the epithelial cells of the liver, kidney and cervix. Significantly down-regulated in hepatocellular carcinoma and right colon adenocarcinoma compared with the respective adjacent normal tissues. Expressed in epididymis (at protein level). |
| Function | function:May play an important role in maintaining normal growth homeostasis in epithelial cells.,induction:Up-regulated by butyrate, trichostatin A and 5'-aza-2' deoxycytidine.,tissue specificity:Abundantly expressed in the epithelial cells of the liver, kidney, gastrointestinal tract and cervix. Significantly down-regulated in hepatocellular carcinoma and right colon adenocarcinoma compared with the respective adjacent normal tissues., |
| Background | |

Nanjing BYabscience technology Co.,Ltd



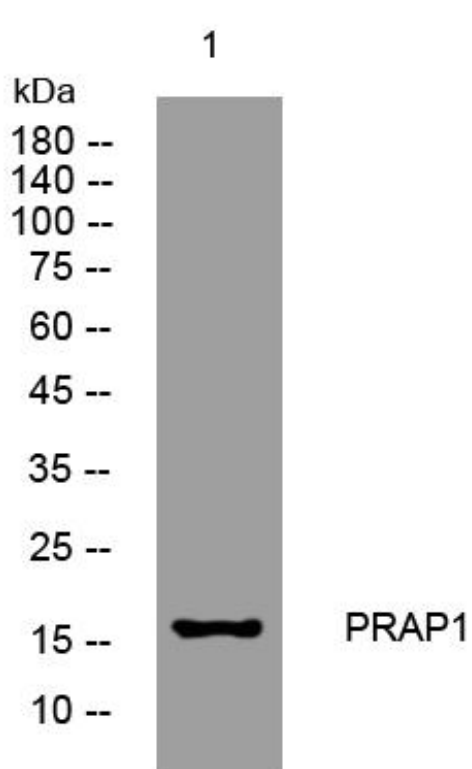
matters needing attention

Avoid repeated freezing and thawing!

Usage suggestions

This product can be used in immunological reaction related experiments. For more information, please consult technical personnel.

Products Images



Western Blot analysis of various cells using PRAP1 mouse mAb