



PRCC mouse mAb

Catalog No	BYmab-08801
Isotype	IgG
Reactivity	Human;Rat;Mouse;
Applications	WB
Gene Name	PRCC TPRC
Protein Name	PRCC
Immunogen	Synthesized peptide derived from human PRCC AA range: 74-124
Specificity	This antibody detects endogenous levels of PRCC at Human
Formulation	Liquid in PBS containing 50% glycerol, 0.5% BSA and 0.02% sodium azide.
Source	Monoclonal, Mouse,IgG
Purification	The antibody was affinity-purified from mouse antiserum by affinity-chromatography using epitope-specific immunogen.
Dilution	WB 1:500-2000
Concentration	1 mg/ml
Purity	≥90%
Storage Stability	-20°C/1 year
Synonyms	
Observed Band	
Cell Pathway	Nucleus .
Tissue Specificity	Ubiquitous in fetal and adult tissues.
Function	caution:The sequence shown here is derived from an Ensembl automatic analysis pipeline and should be considered as preliminary data.,disease:A chromosomal aberration involving PRCC may be a cause of papillary renal cell carcinoma (PRCC) [MIM:605074]. Translocation t(X;1)(p11.2;q21.2) with TFE3.,tissue specificity:Ubiquitous in fetal and adult tissues.,
Background	This gene encodes a protein that may play a role in pre-mRNA splicing. Chromosomal translocations (X;1)(p11;q21) that result in fusion of this gene to TFE3 (GeneID 7030) have been associated with papillary renal cell carcinoma. A PRCC-TFE3 fusion protein is expressed in affected carcinomas and is likely associated with altered gene transactivation. This fusion protein has also been associated with disruption of the cell cycle.[provided by RefSeq, Aug 2010],

Nanjing BYabscience technology Co.,Ltd



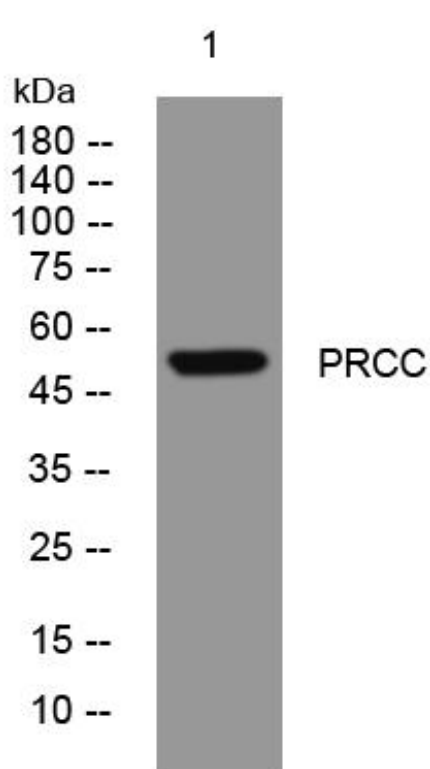
matters needing attention

Avoid repeated freezing and thawing!

Usage suggestions

This product can be used in immunological reaction related experiments. For more information, please consult technical personnel.

Products Images



Western Blot analysis of various cells using PRCC mouse mAb