



NSD3 mouse mAb

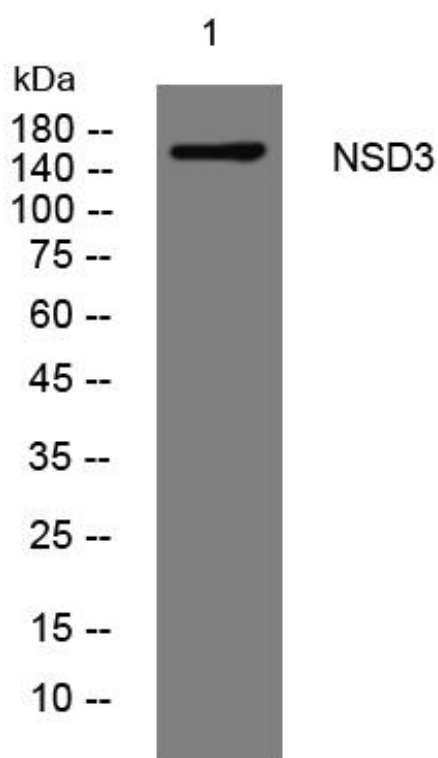
Catalog No	BYmab-08799
Isotype	IgG
Reactivity	Human; Mouse
Applications	WB
Gene Name	WHSC1L1 NSD3 DC28
Protein Name	NSD3
Immunogen	Synthesized peptide derived from human NSD3 AA range: 1373-1423
Specificity	This antibody detects endogenous levels of NSD3 at Human/Mouse
Formulation	Liquid in PBS containing 50% glycerol, 0.5% BSA and 0.02% sodium azide.
Source	Monoclonal, Mouse,IgG
Purification	The antibody was affinity-purified from mouse antiserum by affinity-chromatography using epitope-specific immunogen.
Dilution	WB 1:500-2000
Concentration	1 mg/ml
Purity	≥90%
Storage Stability	-20°C/1 year
Synonyms	
Observed Band	
Cell Pathway	Nucleus . Chromosome .
Tissue Specificity	Highly expressed in brain, heart and skeletal muscle. Expressed at lower level in liver and lung.
Function	catalytic activity:S-adenosyl-L-methionine + histone L-lysine = S-adenosyl-L-homocysteine + histone N(6)-methyl-L-lysine.,disease:A chromosomal aberration involving WHSC1L1 is found in childhood acute myeloid leukemia. Translocation t(8;11)(p11.2;p15) with NUP98.,disease:Defects in WHSC1L1 may be involved in non small cell lung carcinomas (NSCLC). Amplified or overexpressed in NSCLC.,function:Histone methyltransferase. Preferentially methylates 'Lys-4' and 'Lys-27' of histone H3. H3 'Lys-4' methylation represents a specific tag for epigenetic transcriptional activation, while 'Lys-27' is a mark for transcriptional repression.,sequence caution:Contaminating sequence. Potential poly-A sequence.,similarity:Belongs to the histone-lysine methyltransferase family. SET2 subfamily.,similarity:Contains 1 AWS domain.,similarity:Contains 1 post-SET domain.,similarity:Contains 1 SET domain.,similari

Nanjing BYabscience technology Co.,Ltd



Background	This gene is related to the Wolf-Hirschhorn syndrome candidate-1 gene and encodes a protein with PWWP (proline-tryptophan-tryptophan-proline) domains. This protein methylates histone H3 at lysine residues 4 and 27, which represses gene transcription. Two alternatively spliced variants have been described. [provided by RefSeq, May 2015],
matters needing attention	Avoid repeated freezing and thawing!
Usage suggestions	This product can be used in immunological reaction related experiments. For more information, please consult technical personnel.

Products Images



Western Blot analysis of various cells using NSD3 mouse mAb