



INCA1 mouse mAb

Catalog No	BYmab-08796
Isotype	IgG
Reactivity	Human; Mouse
Applications	WB
Gene Name	INCA1 HSD45
Protein Name	INCA1
Immunogen	Synthesized peptide derived from human INCA1 AA range: 10-60
Specificity	This antibody detects endogenous levels of INCA1 at Human/Mouse
Formulation	Liquid in PBS containing 50% glycerol, 0.5% BSA and 0.02% sodium azide.
Source	Monoclonal, Mouse,IgG
Purification	The antibody was affinity-purified from mouse antiserum by affinity-chromatography using epitope-specific immunogen.
Dilution	WB 1:500-2000
Concentration	1 mg/ml
Purity	≥90%
Storage Stability	-20°C/1 year
Synonyms	
Observed Band	
Cell Pathway	Nucleus . Cytoplasm .
Tissue Specificity	Detected in testis, and at lower levels in ovary. Detected at very low levels in testis tumors (PubMed:15159402). Down-regulated in bone marrow cells in acute myeloid and lymphoid leukemia patients as compared with normal bone marrow cells (PubMed:21540187).
Function	PTM:Phosphorylated when part of a complex with CCNA1 and CDK2. Strongly phosphorylated by CDK2 on its C-terminal region spanning amino acid 149-221. Less intensively phosphorylated by CDK2 on its first 75 amino acid residues.,similarity:Belongs to the INCA family.,subunit:Interacts with CCNA1. Identified in a complex with CCNA1 and CDK2.,tissue specificity:Detected in testis, and at lower levels in ovary. Detected at very low levels in testis tumors.,
Background	

Nanjing BYabscience technology Co.,Ltd

网址: www.njbybio.com

官方热线: 025-5229-8998

监督电话: 15950492658



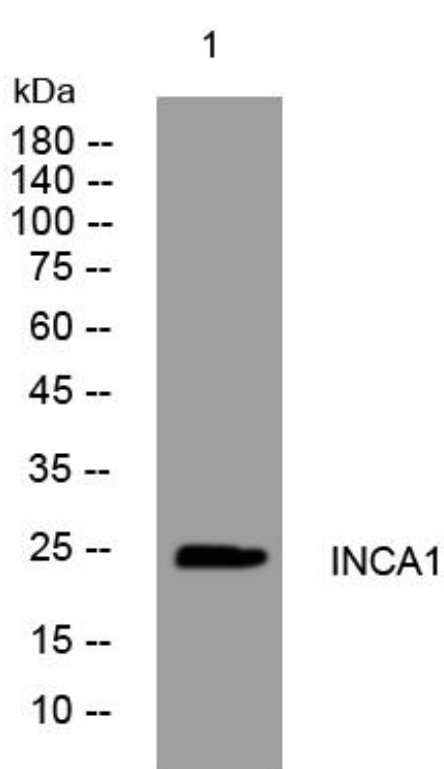
matters needing attention

Avoid repeated freezing and thawing!

Usage suggestions

This product can be used in immunological reaction related experiments. For more information, please consult technical personnel.

Products Images



Western Blot analysis of various cells using INCA1 mouse mAb