



# CC147 mouse mAb

Catalog No	BYmab-08794
Isotype	IgG
Reactivity	Human;Rat;Mouse;
Applications	WB
Gene Name	CCDC147 C10orf80
Protein Name	CC147
Immunogen	Synthesized peptide derived from human CC147 AA range: 723-773
Specificity	This antibody detects endogenous levels of CC147 at Human
Formulation	Liquid in PBS containing 50% glycerol, 0.5% BSA and 0.02% sodium azide.
Source	Monoclonal, Mouse,IgG
Purification	The antibody was affinity-purified from mouse antiserum by affinity-chromatography using epitope-specific immunogen.
Dilution	WB 1:500-2000
Concentration	1 mg/ml
Purity	≥90%
Storage Stability	-20°C/1 year
Synonyms	
Observed Band	
Cell Pathway	Cell projection, cilium . Cell projection, cilium, flagellum . Cytoplasm, cytoskeleton, microtubule organizing center, centrosome . Localized to the entire flagellum and predominantly concentrated in the midpiece. Co-localizes with ODFP2 at the centrosome (By similarity). .
Tissue Specificity	
Function	similarity:Contains 3 LRR (leucine-rich) repeats.,
Background	
matters needing attention	Avoid repeated freezing and thawing!

Nanjing BYabscience technology Co.,Ltd

网址: [www.njbybio.com](http://www.njbybio.com)

官方热线: 025-5229-8998

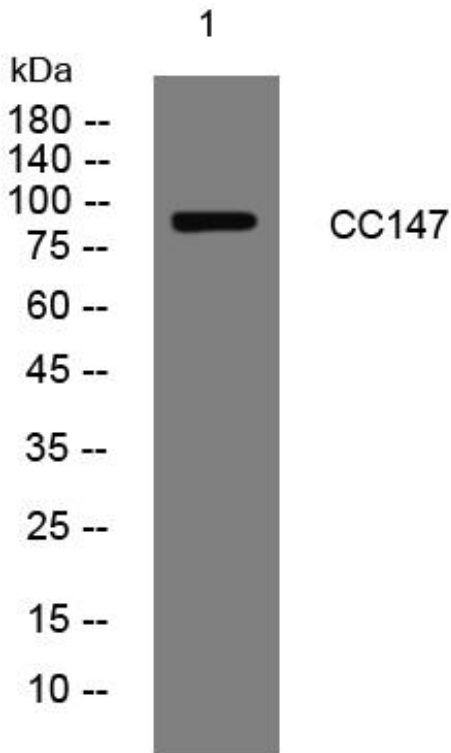
监督电话: 15950492658



### Usage suggestions

This product can be used in immunological reaction related experiments. For more information, please consult technical personnel.

## Products Images



Western Blot analysis of various cells using CC147 mouse mAb

Nanjing BYabscience technology Co.,Ltd

网址: [www.njbybio.com](http://www.njbybio.com)

官方热线: 025-5229-8998

监督电话: 15950492658