



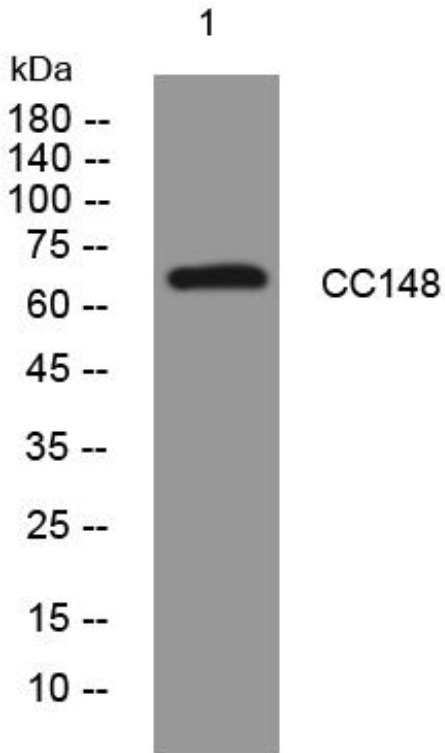
# CC148 mouse mAb

Catalog No	BYmab-08793
Isotype	IgG
Reactivity	Human; Mouse
Applications	WB
Gene Name	CCDC148
Protein Name	CC148
Immunogen	Synthesized peptide derived from human CC148 AA range: 294-344
Specificity	This antibody detects endogenous levels of CC148 at Human/Mouse
Formulation	Liquid in PBS containing 50% glycerol, 0.5% BSA and 0.02% sodium azide.
Source	Monoclonal, Mouse,IgG
Purification	The antibody was affinity-purified from mouse antiserum by affinity-chromatography using epitope-specific immunogen.
Dilution	WB 1:500-2000
Concentration	1 mg/ml
Purity	≥90%
Storage Stability	-20°C/1 year
Synonyms	
Observed Band	
Cell Pathway	
Tissue Specificity	
Function	
Background	
matters needing attention	Avoid repeated freezing and thawing!
Usage suggestions	This product can be used in immunological reaction related experiments. For more information, please consult technical personnel.

Nanjing BYabscience technology Co.,Ltd



## Products Images



Western Blot analysis of various cells using CC148 mouse mAb