



# LAMP5 mouse mAb

<b>Catalog No</b>	BYmab-08784
<b>Isotype</b>	IgG
<b>Reactivity</b>	Human; Mouse;Rat
<b>Applications</b>	WB
<b>Gene Name</b>	LAMP5 C20orf103
<b>Protein Name</b>	LAMP5
<b>Immunogen</b>	Synthesized peptide derived from human LAMP5 AA range: 143-193
<b>Specificity</b>	This antibody detects endogenous levels of LAMP5 at Human/Mouse/Rat
<b>Formulation</b>	Liquid in PBS containing 50% glycerol, 0.5% BSA and 0.02% sodium azide.
<b>Source</b>	Monoclonal, Mouse,IgG
<b>Purification</b>	The antibody was affinity-purified from mouse antiserum by affinity-chromatography using epitope-specific immunogen.
<b>Dilution</b>	WB 1:500-2000
<b>Concentration</b>	1 mg/ml
<b>Purity</b>	≥90%
<b>Storage Stability</b>	-20°C/1 year
<b>Synonyms</b>	
<b>Observed Band</b>	
<b>Cell Pathway</b>	Cell membrane ; Single-pass type I membrane protein . Cytoplasmic vesicle, secretory vesicle, synaptic vesicle membrane ; Single-pass type I membrane protein . Endoplasmic reticulum-Golgi intermediate compartment membrane ; Single-pass type I membrane protein . Endosome membrane ; Single-pass type I membrane protein . Cytoplasmic vesicle membrane ; Single-pass type I membrane protein . Cell projection, dendrite . Cell projection, growth cone membrane ; Single-pass type I membrane protein . Early endosome membrane ; Single-pass type I membrane protein . Recycling endosome . Recycles from the vesicles of the endocytic recycling compartment (ERC) to the plasma membrane (By similarity). Colocalizes with UNC93B1 in large endosomal intracellular vesicles (PubMed:21642595). Accumulates in the end
<b>Tissue Specificity</b>	Expressed in plasmacytoid dendritic cells. Expressed in suprabasal skin keratinocytes and squamous cells (at protein level). Expressed in the brain and weakly in spleen and skin. Expressed in plasmacytoid dendritic cells.
<b>Function</b>	similarity:Belongs to the LAMP family.,

**Nanjing BYabscience technology Co.,Ltd**



## Background

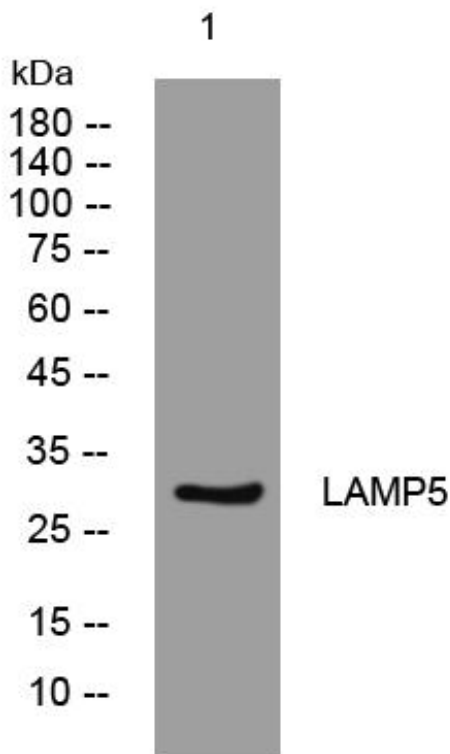
### matters needing attention

Avoid repeated freezing and thawing!

### Usage suggestions

This product can be used in immunological reaction related experiments. For more information, please consult technical personnel.

## Products Images



Western Blot analysis of various cells using LAMP5 mouse mAb

Nanjing BYabscience technology Co.,Ltd

网址: [www.njbybio.com](http://www.njbybio.com)

官方热线: 025-5229-8998

监督电话: 15950492658