



RBV1C mouse mAb

Catalog No	BYmab-08781
Isotype	IgG
Reactivity	Human;Rat;Mouse;
Applications	WB
Gene Name	RBMV1C
Protein Name	RBV1C
Immunogen	Synthesized peptide derived from human RBV1C AA range: 321-371
Specificity	This antibody detects endogenous levels of RBV1C at Human
Formulation	Liquid in PBS containing 50% glycerol, 0.5% BSA and 0.02% sodium azide.
Source	Monoclonal, Mouse,IgG
Purification	The antibody was affinity-purified from mouse antiserum by affinity-chromatography using epitope-specific immunogen.
Dilution	WB 1:500-2000
Concentration	1 mg/ml
Purity	≥90%
Storage Stability	-20°C/1 year
Synonyms	
Observed Band	
Cell Pathway	Nucleus .
Tissue Specificity	Testis-specific.
Function	developmental stage:Expressed in all of the transcriptionally active stages of germ cell development from spermatogonia through spermatocytes to round spermatids.,function:RNA-binding protein which may be involved in spermatogenesis. Required for sperm development, possibly by participating in pre-mRNA splicing in the testis.,miscellaneous:The RBMV1 proteins are encoded by strongly repeated regions of the Y chromosome, mostly within the AZFb region. The exact number of functional copies is unclear and may vary between individuals, and some of them may represent pseudogenes. The proteins are very similar, which gives their individual characterization difficult. Thus, most experiments do not discriminate between the different members. One can therefore suppose that reported interactions with a RBMV1 protein involve all the proteins.,similarity:Contains 1 RRM (RNA recognition motif) domain.,su

Nanjing BYabscience technology Co.,Ltd



Background

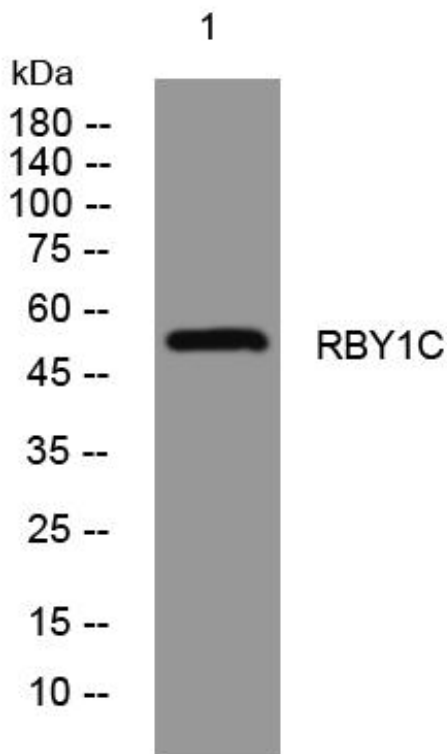
matters needing attention

Avoid repeated freezing and thawing!

Usage suggestions

This product can be used in immunological reaction related experiments. For more information, please consult technical personnel.

Products Images



Western Blot analysis of various cells using RBY1C mouse mAb

Nanjing BYabs science technology Co.,Ltd

网址: www.njbybio.com

官方热线: 025-5229-8998

监督电话: 15950492658