



# TTL mouse mAb

<b>Catalog No</b>	BYmab-08778
<b>Isotype</b>	IgG
<b>Reactivity</b>	Human; Mouse;Rat
<b>Applications</b>	WB
<b>Gene Name</b>	TTL
<b>Protein Name</b>	TTL
<b>Immunogen</b>	Synthesized peptide derived from human TTL AA range: 160-210
<b>Specificity</b>	This antibody detects endogenous levels of TTL at Human/Mouse/Rat
<b>Formulation</b>	Liquid in PBS containing 50% glycerol, 0.5% BSA and 0.02% sodium azide.
<b>Source</b>	Monoclonal, Mouse,IgG
<b>Purification</b>	The antibody was affinity-purified from mouse antiserum by affinity-chromatography using epitope-specific immunogen.
<b>Dilution</b>	WB 1:500-2000
<b>Concentration</b>	1 mg/ml
<b>Purity</b>	≥90%
<b>Storage Stability</b>	-20°C/1 year
<b>Synonyms</b>	
<b>Observed Band</b>	
<b>Cell Pathway</b>	
<b>Tissue Specificity</b>	
<b>Function</b>	catalytic activity:ATP + detyrosinated alpha-tubulin + L-tyrosine = alpha-tubulin + ADP + phosphate.,cofactor:Magnesium.,cofactor:Potassium.,function:Catalyzes the post-translational addition of a tyrosine to the C-terminal end of detyrosinated alpha-tubulin.,similarity:Belongs to the tubulin--tyrosine ligase family.,similarity:Contains 1 TTL domain.,subunit:Monomer.,
<b>Background</b>	TTL is a cytosolic enzyme involved in the posttranslational modification of alpha-tubulin (see MIM 602529). Alpha-tubulin within assembled microtubules is detyrosinated over time at the C terminus. After microtubule disassembly, TTL restores the tyrosine residues and consequently participates in a cycle of tubulin detyrosination and tyrosination (Erck et al., 2003 [PubMed 14571137]).[supplied by OMIM, Mar 2008],

**Nanjing BYabscience technology Co.,Ltd**



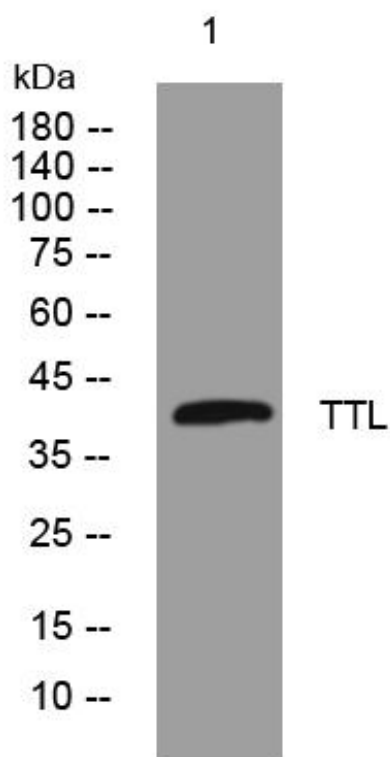
**matters needing attention**

Avoid repeated freezing and thawing!

**Usage suggestions**

This product can be used in immunological reaction related experiments. For more information, please consult technical personnel.

## Products Images



Western Blot analysis of various cells using TTL mouse mAb