



# SC5AC mouse mAb

Catalog No	BYmab-08768
Isotype	IgG
Reactivity	Human; Mouse
Applications	WB
Gene Name	SLC5A12 SMCT2
Protein Name	SC5AC
Immunogen	Synthesized peptide derived from human SC5AC AA range: 84-134
Specificity	This antibody detects endogenous levels of SC5AC at Human/Mouse
Formulation	Liquid in PBS containing 50% glycerol, 0.5% BSA and 0.02% sodium azide.
Source	Monoclonal, Mouse,IgG
Purification	The antibody was affinity-purified from mouse antiserum by affinity-chromatography using epitope-specific immunogen.
Dilution	WB 1:500-2000
Concentration	1 mg/ml
Purity	≥90%
Storage Stability	-20°C/1 year
Synonyms	
Observed Band	
Cell Pathway	Apical cell membrane ; Multi-pass membrane protein . Detected at the brush border membrane of the kidney. Colocalizes with viementin in Mueller cells (By similarity). .
Tissue Specificity	
Function	function:Acts as an electroneutral and low-affinity sodium (Na(+))-dependent sodium-coupled solute transporter. Catalyzes the transport across the plasma membrane of many monocarboxylates such as lactate, pyruvate, nicotinate, propionate, butyrate and beta-D-hydroxybutyrate. May be responsible for the first step of reabsorption of monocarboxylates from the lumen of the proximal tubule of the kidney and the small intestine. May play also a role in monocarboxylates transport in the retina (By similarity). Mediates electroneutral uptake of lactate, with a stoichiometry of 2 Na(+) for each lactate.,miscellaneous:Cotransport of monocarboxylates and nicotinate strongly inhibited by ibuprofen, fenoprofen and ketoprofen.,similarity:Belongs to the sodium:solute symporter (SSF) (TC 2.A.21) family.,subcellular location:Detected at the brush border membrane of the kidney.

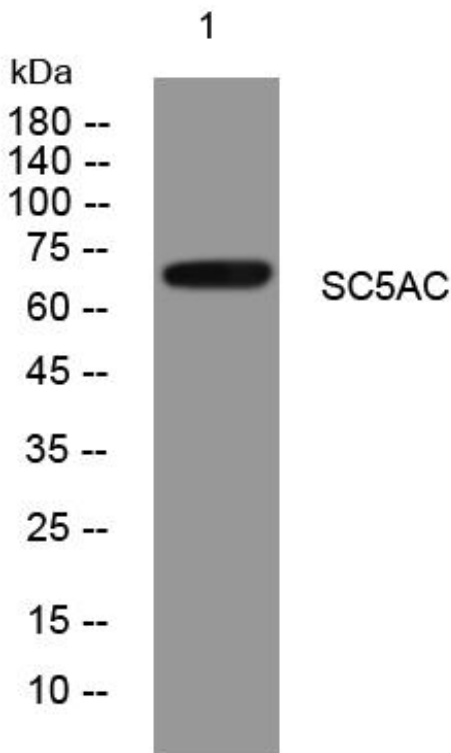
Nanjing BYabscience technology Co.,Ltd



Colocalizes with viementin

<b>Background</b>	Normal blood lactate is maintained at about 1.5 mM, and little filtered lactate is excreted in urine. Reabsorption of lactate is mediated by the low-affinity Na(+)-coupled lactate transporter SLC5A12 in the initial part of the proximal tubule and by the high-affinity Na(+)-coupled lactate transporter SLC5A8 (MIM 608044) in the distal proximal tubule (Gopal et al., 2007 [PubMed 17692818]).[supplied by OMIM, Dec 2008],
<b>matters needing attention</b>	Avoid repeated freezing and thawing!
<b>Usage suggestions</b>	This product can be used in immunological reaction related experiments. For more information, please consult technical personnel.

## Products Images



Nanjing BYabscience technology Co.,Ltd

网址: [www.njbybio.com](http://www.njbybio.com)

官方热线: 025-5229-8998

监督电话: 15950492658