



CCSAP mouse mAb

Catalog No	BYmab-08767
Isotype	IgG
Reactivity	Human; Mouse
Applications	WB
Gene Name	CCSAP C1orf96 CSAP
Protein Name	CCSAP
Immunogen	Synthesized peptide derived from human CCSAP AA range: 94-144
Specificity	This antibody detects endogenous levels of CCSAP at Human/Mouse
Formulation	Liquid in PBS containing 50% glycerol, 0.5% BSA and 0.02% sodium azide.
Source	Monoclonal, Mouse,IgG
Purification	The antibody was affinity-purified from mouse antiserum by affinity-chromatography using epitope-specific immunogen.
Dilution	WB 1:500-2000
Concentration	1 mg/ml
Purity	≥90%
Storage Stability	-20°C/1 year
Synonyms	
Observed Band	
Cell Pathway	Cytoplasm, cytoskeleton, microtubule organizing center, centrosome, centriole . Cytoplasm, cytoskeleton, spindle . Cytoplasm, cytoskeleton . Cytoplasm, cytoskeleton, cilium basal body . Cytoplasm, cytoskeleton, cilium axoneme . Cell projection, axon . Cell projection, cilium . Cytoplasm, cytoskeleton, microtubule organizing center, centrosome . Localizes to two to four centrioles throughout the cell cycle. Localizes to mitotic spindle microtubules during prometaphase and throughout the remainder of mitosis. Localizes to cytoskeleton on interphase. Localizes at the ciliary transition zone which connects the basal bodies to ciliary microtubules. Colocalizes with polyglutamylated tubulin. .
Tissue Specificity	
Function	
Background	

Nanjing BYabscience technology Co.,Ltd



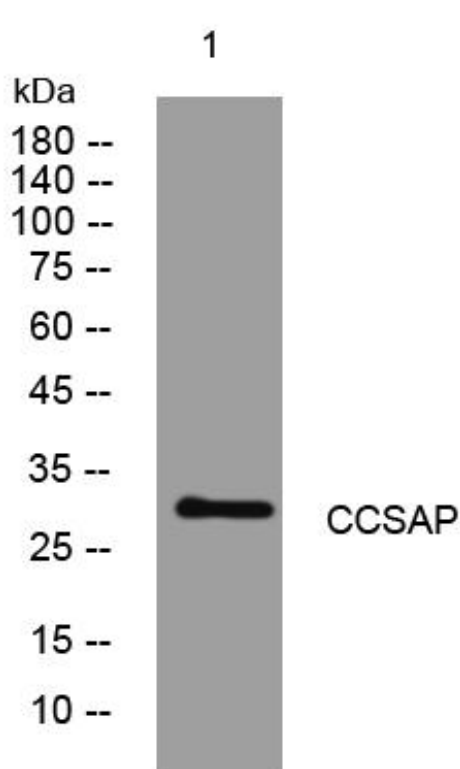
matters needing attention

Avoid repeated freezing and thawing!

Usage suggestions

This product can be used in immunological reaction related experiments. For more information, please consult technical personnel.

Products Images



Western Blot analysis of various cells using CCSAP mouse mAb