



LAT1L mouse mAb

Catalog No	BYmab-08764
Isotype	IgG
Reactivity	Human;Rat;Mouse;
Applications	WB
Gene Name	SLC7A5P2 IMAA MMAA
Protein Name	LAT1L
Immunogen	Synthesized peptide derived from human LAT1L AA range: 118-168
Specificity	This antibody detects endogenous levels of LAT1L at Human
Formulation	Liquid in PBS containing 50% glycerol, 0.5% BSA and 0.02% sodium azide.
Source	Monoclonal, Mouse,IgG
Purification	The antibody was affinity-purified from mouse antiserum by affinity-chromatography using epitope-specific immunogen.
Dilution	WB 1:500-2000
Concentration	1 mg/ml
Purity	≥90%
Storage Stability	-20°C/1 year
Synonyms	
Observed Band	
Cell Pathway	Membrane ; Multi-pass membrane protein .
Tissue Specificity	Expressed in peripheral blood mononuclear cells and lymphoid and myeloid cell lines.
Function	caution:Could be the product of a pseudogene.,induction:Up-regulated by concanavilin-A stimulation.,similarity:Belongs to the amino acid-polyamine-organocation (APC) superfamily. L-type amino acid transporter (LAT) (TC 2.A.3.8) family.,tissue specificity:Expressed in peripheral blood mononuclear cells and lymphoid and myeloid cell lines.,
Background	
matters needing attention	Avoid repeated freezing and thawing!

Nanjing BYabscience technology Co.,Ltd

网址: www.njbybio.com

官方热线: 025-5229-8998

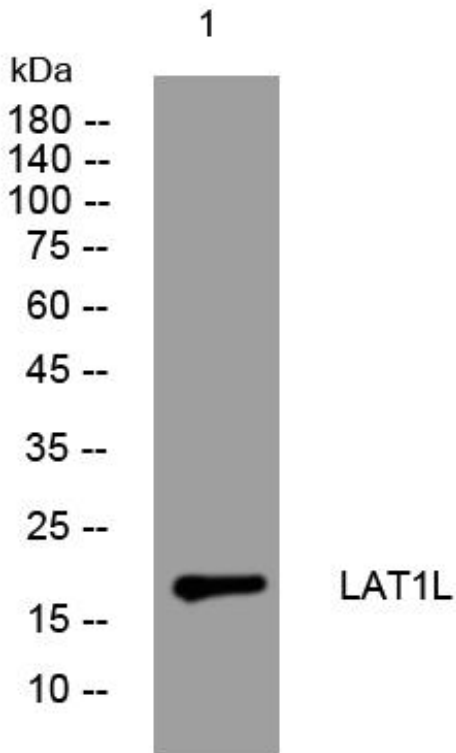
监督电话: 15950492658



Usage suggestions

This product can be used in immunological reaction related experiments. For more information, please consult technical personnel.

Products Images



Western Blot analysis of various cells using LAT1L mouse mAb

Nanjing BYabscience technology Co.,Ltd

网址: www.njbybio.com

官方热线: 025-5229-8998

监督电话: 15950492658