



C2G1P mouse mAb

Catalog No	BYmab-08763
Isotype	IgG
Reactivity	Human;Rat;Mouse;
Applications	WB
Gene Name	CYP2G1P CYP2GP1
Protein Name	C2G1P
Immunogen	Synthesized peptide derived from human C2G1P AA range: 13-63
Specificity	This antibody detects endogenous levels of C2G1P at Human
Formulation	Liquid in PBS containing 50% glycerol, 0.5% BSA and 0.02% sodium azide.
Source	Monoclonal, Mouse,IgG
Purification	The antibody was affinity-purified from mouse antiserum by affinity-chromatography using epitope-specific immunogen.
Dilution	WB 1:500-2000
Concentration	1 mg/ml
Purity	≥90%
Storage Stability	-20°C/1 year
Synonyms	
Observed Band	
Cell Pathway	
Tissue Specificity	
Function	caution:Could be the product of a pseudogene. In contrast to other members of the family, it is shorter at the N-terminus.,cofactor:Heme group.,similarity:Belongs to the cytochrome P450 family.,
Background	
matters needing attention	Avoid repeated freezing and thawing!

Nanjing BYabscience technology Co.,Ltd

网址: www.njbybio.com

官方热线: 025-5229-8998

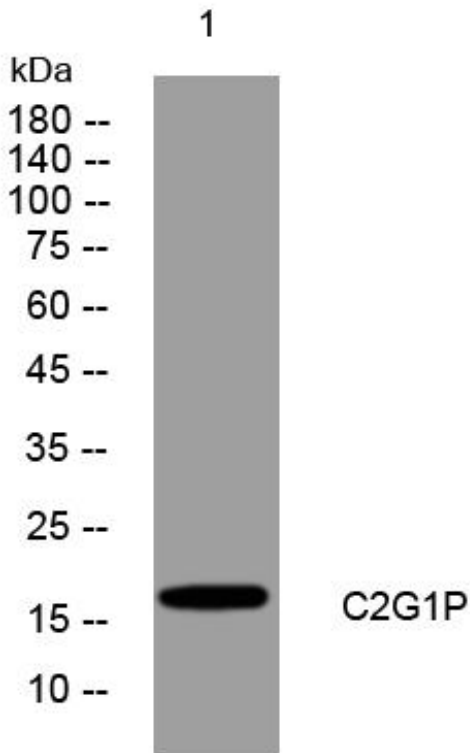
监督电话: 15950492658



Usage suggestions

This product can be used in immunological reaction related experiments. For more information, please consult technical personnel.

Products Images



Western Blot analysis of various cells using C2G1P mouse mAb

Nanjing BYabs science technology Co.,Ltd

网址: www.njbybio.com

官方热线: 025-5229-8998

监督电话: 15950492658