



RN5A mouse mAb

Catalog No	BYmab-08755
Isotype	IgG
Reactivity	Human; Mouse
Applications	WB
Gene Name	RNASEL RNS4
Protein Name	RN5A
Immunogen	Synthesized peptide derived from human RN5A AA range: 248-298
Specificity	This antibody detects endogenous levels of RN5A at Human/Mouse
Formulation	Liquid in PBS containing 50% glycerol, 0.5% BSA and 0.02% sodium azide.
Source	Monoclonal, Mouse,IgG
Purification	The antibody was affinity-purified from mouse antiserum by affinity-chromatography using epitope-specific immunogen.
Dilution	WB 1:500-2000
Concentration	1 mg/ml
Purity	≥90%
Storage Stability	-20°C/1 year
Synonyms	
Observed Band	
Cell Pathway	Cytoplasm . Mitochondrion .
Tissue Specificity	Highly expressed in spleen and thymus followed by prostate, testis, uterus, small intestine, colon and peripheral blood leukocytes.
Function	catalytic activity:Cleaves 3' of UpNp dimers, with preference for UU and UA sequences, to sets of discrete products ranging from between 4 and 22 nucleotides in length.,cofactor:Manganese or magnesium. Required for optimal RNA cleavage rates.,disease:Defects in RNASEL may be the cause of susceptibility to hereditary prostate cancer 1 (HPC1) [MIM:176807, 601518],domain:The nine ankyrin repeats also called 2-5A sensor constitute the 2-5A binding domain.,domain:The protein kinase domain is predicted to be catalytically inactive. It allows the homodimerization.,enzyme regulation:After binding to 2-5A (5'-phosphorylated 2',5'-linked oligoadenylates) the homodimerization and subsequent activation occurs. Inhibited by RNase L inhibitor.,function:Endoribonuclease, mediator of interferon action, which play a role in mediating resistance to virus infection and apoptosis. Might play a central

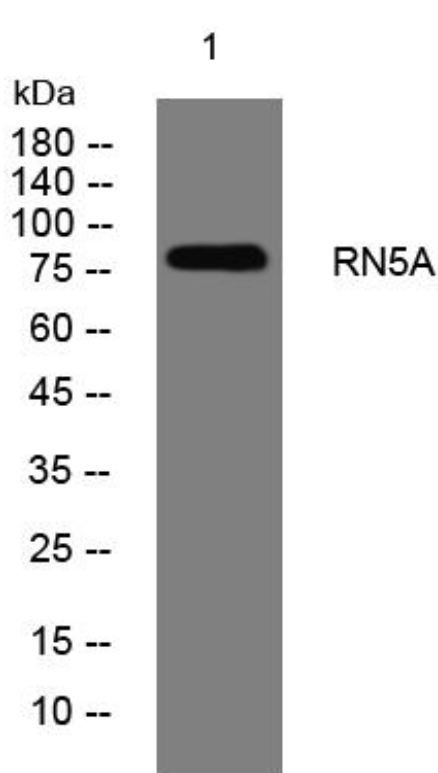
Nanjing BYabscience technology Co.,Ltd



role

Background	This gene encodes a component of the interferon-regulated 2-5A system that functions in the antiviral and antiproliferative roles of interferons. Mutations in this gene have been associated with predisposition to prostate cancer and this gene is a candidate for the hereditary prostate cancer 1 (HPC1) allele. [provided by RefSeq, Jul 2008],
matters needing attention	Avoid repeated freezing and thawing!
Usage suggestions	This product can be used in immunological reaction related experiments. For more information, please consult technical personnel.

Products Images



Nanjing BYabscience technology Co.,Ltd

网址: www.njbybio.com

官方热线: 025-5229-8998

监督电话: 15950492658