



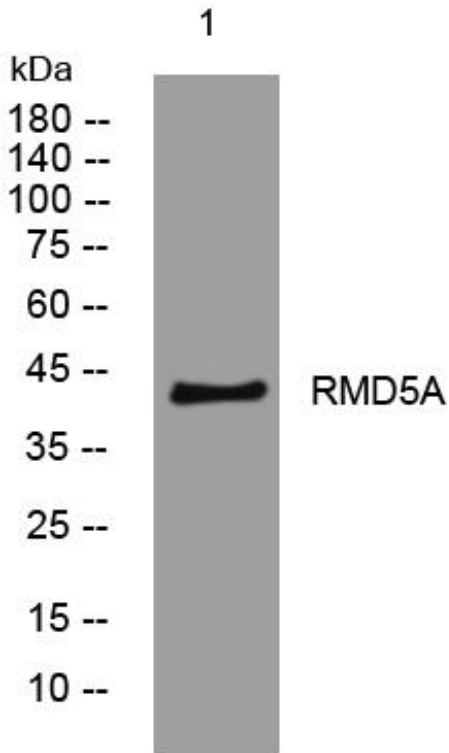
RMD5A mouse mAb

Catalog No	BYmab-08749
Isotype	IgG
Reactivity	Human; Mouse
Applications	WB
Gene Name	RMND5A
Protein Name	RMD5A
Immunogen	Synthesized peptide derived from human RMD5A AA range: 119-169
Specificity	This antibody detects endogenous levels of RMD5A at Human/Mouse
Formulation	Liquid in PBS containing 50% glycerol, 0.5% BSA and 0.02% sodium azide.
Source	Monoclonal, Mouse,IgG
Purification	The antibody was affinity-purified from mouse antiserum by affinity-chromatography using epitope-specific immunogen.
Dilution	WB 1:500-2000
Concentration	1 mg/ml
Purity	≥90%
Storage Stability	-20°C/1 year
Synonyms	
Observed Band	
Cell Pathway	Nucleus, nucleoplasm . Cytoplasm .
Tissue Specificity	
Function	similarity:Contains 1 CTLH domain.,similarity:Contains 1 LisH domain.,
Background	
matters needing attention	Avoid repeated freezing and thawing!
Usage suggestions	This product can be used in immunological reaction related experiments. For more information, please consult technical personnel.

Nanjing BYabscience technology Co.,Ltd



Products Images



Western Blot analysis of various cells using RMD5A mouse mAb