



SPY1 mouse mAb

Catalog No	BYmab-08747
Isotype	IgG
Reactivity	Human; Mouse
Applications	WB
Gene Name	SPRY1
Protein Name	SPY1
Immunogen	Synthesized peptide derived from human SPY1 AA range: 129-179
Specificity	This antibody detects endogenous levels of SPY1 at Human/Mouse
Formulation	Liquid in PBS containing 50% glycerol, 0.5% BSA and 0.02% sodium azide.
Source	Monoclonal, Mouse,IgG
Purification	The antibody was affinity-purified from mouse antiserum by affinity-chromatography using epitope-specific immunogen.
Dilution	WB 1:500-2000
Concentration	1 mg/ml
Purity	≥90%
Storage Stability	-20°C/1 year
Synonyms	
Observed Band	
Cell Pathway	Cytoplasm. Membrane; Peripheral membrane protein. Found in the cytoplasm in unstimulated cells but is translocated to the membrane ruffles in cells stimulated with EGF (epidermal growth factor).
Tissue Specificity	
Function	domain:The Cys-rich domain is responsible for the localization of the protein to the membrane ruffles.,function:May function as an antagonist of fibroblast growth factor (FGF) pathways and may negatively modulate respiratory organogenesis.,induction:By FGF signaling.,similarity:Belongs to the sprouty family.,similarity:Contains 1 SPR (sprouty) domain.,subcellular location:Found in the cytoplasm in unstimulated cells but is translocated to the membrane ruffles in cells stimulated with EGF (epidermal growth factor).,
Background	

Nanjing BYabscience technology Co.,Ltd

网址: www.njbybio.com

官方热线: 025-5229-8998

监督电话: 15950492658



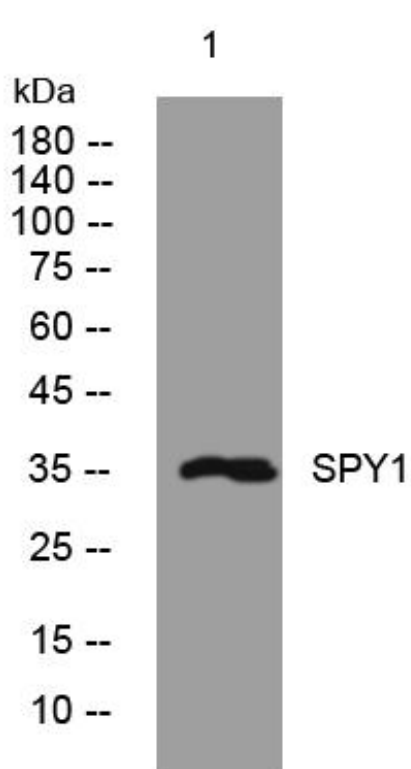
matters needing attention

Avoid repeated freezing and thawing!

Usage suggestions

This product can be used in immunological reaction related experiments. For more information, please consult technical personnel.

Products Images



Western Blot analysis of various cells using SPY1 mouse mAb