



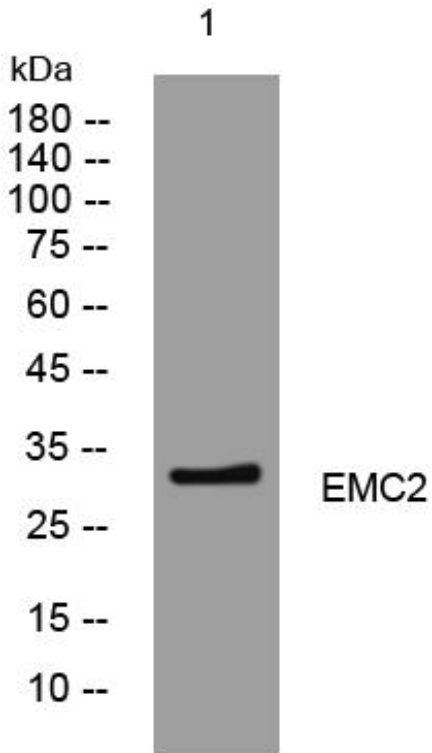
EMC2 mouse mAb

| | |
|---------------------------|---|
| Catalog No | BYmab-08746 |
| Isotype | IgG |
| Reactivity | Human; Mouse;Rat |
| Applications | WB |
| Gene Name | EMC2 KIAA0103 TTC35 |
| Protein Name | EMC2 |
| Immunogen | Synthesized peptide derived from human EMC2 AA range: 103-153 |
| Specificity | This antibody detects endogenous levels of EMC2 at Human/Mouse/Rat |
| Formulation | Liquid in PBS containing 50% glycerol, 0.5% BSA and 0.02% sodium azide. |
| Source | Monoclonal, Mouse,IgG |
| Purification | The antibody was affinity-purified from mouse antiserum by affinity-chromatography using epitope-specific immunogen. |
| Dilution | WB 1:500-2000 |
| Concentration | 1 mg/ml |
| Purity | ≥90% |
| Storage Stability | -20°C/1 year |
| Synonyms | |
| Observed Band | |
| Cell Pathway | Endoplasmic reticulum membrane ; Peripheral membrane protein ; Cytoplasmic side . May also localize to the nuclear envelope. . |
| Tissue Specificity | |
| Function | similarity:Contains 3 TPR repeats., |
| Background | |
| matters needing attention | Avoid repeated freezing and thawing! |
| Usage suggestions | This product can be used in immunological reaction related experiments. For more information, please consult technical personnel. |

Nanjing BYabscience technology Co.,Ltd



Products Images



Western Blot analysis of various cells using EMC2 mouse mAb

Nanjing BYabs science technology Co.,Ltd

网址: www.njbybio.com

官方热线: 025-5229-8998

监督电话: 15950492658