



SP110 mouse mAb

Catalog No	BYmab-08735
Isotype	IgG
Reactivity	Human; Mouse;Rat
Applications	WB
Gene Name	SP110
Protein Name	SP110
Immunogen	Synthesized peptide derived from human SP110 AA range: 453-503
Specificity	This antibody detects endogenous levels of SP110 at Human/Mouse/Rat
Formulation	Liquid in PBS containing 50% glycerol, 0.5% BSA and 0.02% sodium azide.
Source	Monoclonal, Mouse,IgG
Purification	The antibody was affinity-purified from mouse antiserum by affinity-chromatography using epitope-specific immunogen.
Dilution	WB 1:500-2000
Concentration	1 mg/ml
Purity	≥90%
Storage Stability	-20°C/1 year
Synonyms	
Observed Band	
Cell Pathway	Nucleus . Found in the nuclear body.
Tissue Specificity	Highly expressed in peripheral blood leukocytes and spleen. Detected at intermediate levels in thymus, prostate, testis, ovary, small intestine and colon, and at low levels in heart, brain, placenta, lung, liver, skeletal muscle, kidney and pancreas.
Function	disease:Defects in SP110 are the cause of hepatic venoocclusive disease with immunodeficiency (VODI) [MIM:235550]. VODI is an autosomal recessive primary immunodeficiency associated with hepatic vascular occlusion and fibrosis. The immunodeficiency is characterized by severe hypogammaglobulinemia, combined T and B cell immunodeficiency, absent lymph node germinal centers, and absent tissue plasma cells.,function:Transcription factor. May be a nuclear hormone receptor coactivator. Enhances transcription of genes with retinoic acid response elements (RARE).,induction:By interferon gamma and by all-trans retinoic acid.,online information:SP110 mutation db,PTM:Phosphorylated (isoform 2).,similarity:Contains 1 bromo domain.,similarity:Contains 1 HSR

Nanjing BYabscience technology Co.,Ltd



domain.,similarity:Contains 1 PHD-type zinc finger.,similarity:Contains 1 SAND domain.,subcellular location:Found in the nuclear body.,subunit:Is

Background

The nuclear body is a multiprotein complex that may have a role in the regulation of gene transcription. This gene is a member of the SP100/SP140 family of nuclear body proteins and encodes a leukocyte-specific nuclear body component. The protein can function as an activator of gene transcription and may serve as a nuclear hormone receptor coactivator. In addition, it has been suggested that the protein may play a role in ribosome biogenesis and in the induction of myeloid cell differentiation. Alternative splicing has been observed for this gene and three transcript variants, encoding distinct isoforms, have been identified. [provided by RefSeq, Jul 2008],

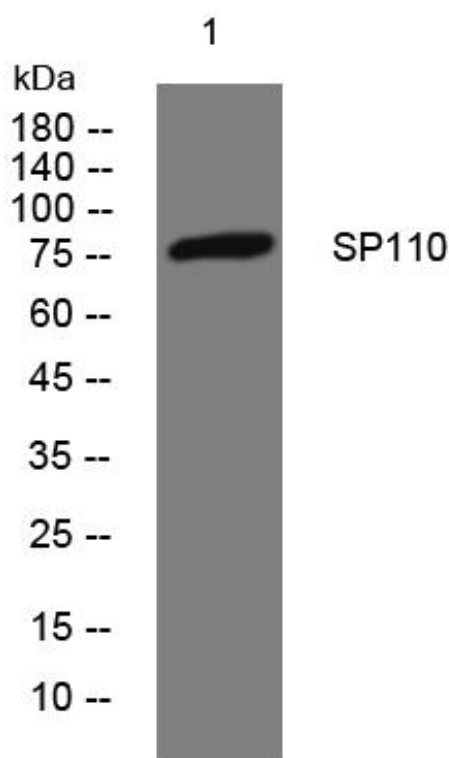
matters needing attention

Avoid repeated freezing and thawing!

Usage suggestions

This product can be used in immunological reaction related experiments. For more information, please consult technical personnel.

Products Images



Western Blot analysis of various cells using SP110 mouse mAb