



SPT6H mouse mAb

Catalog No	BYmab-08726
Isotype	IgG
Reactivity	Human; Mouse
Applications	WB
Gene Name	SUPT6H KIAA0162 SPT6H
Protein Name	SPT6H
Immunogen	Synthesized peptide derived from human SPT6H AA range: 938-988
Specificity	This antibody detects endogenous levels of SPT6H at Human/Mouse
Formulation	Liquid in PBS containing 50% glycerol, 0.5% BSA and 0.02% sodium azide.
Source	Monoclonal, Mouse,IgG
Purification	The antibody was affinity-purified from mouse antiserum by affinity-chromatography using epitope-specific immunogen.
Dilution	WB 1:500-2000
Concentration	1 mg/ml
Purity	≥90%
Storage Stability	-20°C/1 year
Synonyms	
Observed Band	
Cell Pathway	Nucleus .
Tissue Specificity	Ubiquitously expressed.
Function	function:Acts to stimulate transcriptional elongation by RNA polymerase II.,similarity:Belongs to the SPT6 family.,similarity:Contains 1 S1 motif domain.,similarity:Contains 1 SH2 domain.,subunit:Interacts with RNA polymerase II and the DRB sensitivity-inducing factor complex (DSIF complex), which is composed of SUPT5H and SUPT4H1.,tissue specificity:Ubiquitously expressed.,
Background	
matters needing attention	Avoid repeated freezing and thawing!

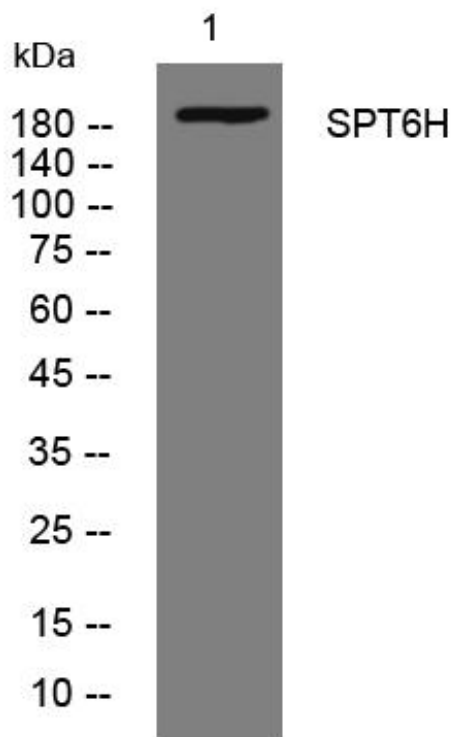
Nanjing BYabscience technology Co.,Ltd



Usage suggestions

This product can be used in immunological reaction related experiments. For more information, please consult technical personnel.

Products Images



Nanjing BYabscience technology Co.,Ltd

网址: www.njbybio.com

官方热线: 025-5229-8998

监督电话: 15950492658