



ABTB1 mouse mAb

| | |
|--------------------|---|
| Catalog No | BYmab-08709 |
| Isotype | IgG |
| Reactivity | Human; Mouse;Rat |
| Applications | WB |
| Gene Name | ABTB1 BPOZ PP2259 |
| Protein Name | ABTB1 |
| Immunogen | Synthesized peptide derived from human ABTB1 AA range: 163-213 |
| Specificity | This antibody detects endogenous levels of ABTB1 at Human/Mouse/Rat |
| Formulation | Liquid in PBS containing 50% glycerol, 0.5% BSA and 0.02% sodium azide. |
| Source | Monoclonal, Mouse,IgG |
| Purification | The antibody was affinity-purified from mouse antiserum by affinity-chromatography using epitope-specific immunogen. |
| Dilution | WB 1:500-2000 |
| Concentration | 1 mg/ml |
| Purity | ≥90% |
| Storage Stability | -20°C/1 year |
| Synonyms | |
| Observed Band | |
| Cell Pathway | Cytoplasm . |
| Tissue Specificity | Ubiquitously expressed in all fetal tissues examined including heart, brain, liver, and kidney. Also expressed at lower levels in both adult heart and hypertrophic heart. |
| Function | function:May act as a mediator of the PTEN growth-suppressive signaling pathway. May play a role in developmental processes.,similarity:Contains 2 ANK repeats.,similarity:Contains 2 BTB (POZ) domains.,tissue specificity:Ubiquitously expressed in all fetal tissues examined including heart, brain, liver, and kidney. Also expressed at lower levels in both adult heart and hypertrophic heart., |
| Background | This gene encodes a protein with an ankyrin repeat region and two BTB/POZ domains, which are thought to be involved in protein-protein interactions. Expression of this gene is activated by the phosphatase and tensin homolog, a tumor suppressor. Alternate splicing results in three transcript variants. [provided by RefSeq, Mar 2010], |

Nanjing BYabscience technology Co.,Ltd



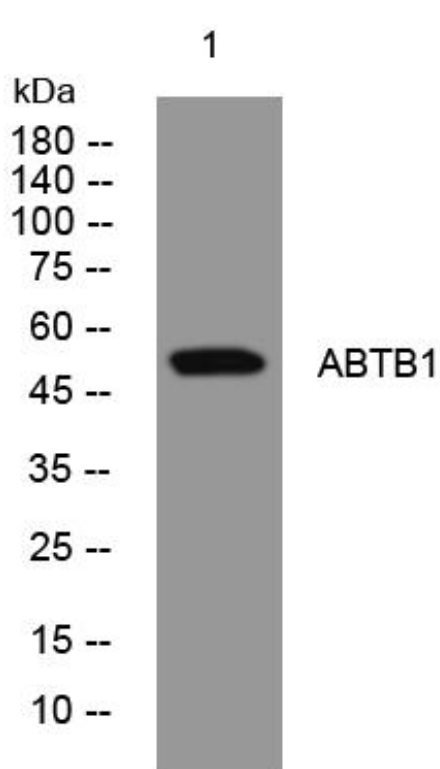
matters needing attention

Avoid repeated freezing and thawing!

Usage suggestions

This product can be used in immunological reaction related experiments. For more information, please consult technical personnel.

Products Images



Western Blot analysis of various cells using ABTB1 mouse mAb