



MPP4 mouse mAb

Catalog No	BYmab-08708
Isotype	IgG
Reactivity	Human; Mouse;Rat
Applications	WB
Gene Name	MPP4 ALS2CR5 DLG6
Protein Name	MPP4
Immunogen	Synthesized peptide derived from human MPP4 AA range: 388-438
Specificity	This antibody detects endogenous levels of MPP4 at Human/Mouse/Rat
Formulation	Liquid in PBS containing 50% glycerol, 0.5% BSA and 0.02% sodium azide.
Source	Monoclonal, Mouse,IgG
Purification	The antibody was affinity-purified from mouse antiserum by affinity-chromatography using epitope-specific immunogen.
Dilution	WB 1:500-2000
Concentration	1 mg/ml
Purity	≥90%
Storage Stability	-20°C/1 year
Synonyms	
Observed Band	
Cell Pathway	Cytoplasm . Detected at the outer limiting membrane (OLM) and in the outer plexiform layer (OPL) of the retina. At the OLM, detected apical to the adherens junction (AJ).
Tissue Specificity	Expressed in the retina (at protein level). Highly expressed in the retina. Lower amounts are detected in brain, testis, ARPE-19, RPE/choroid and fetal eye. Isoform 5 is retina-specific.
Function	function:May play a role in retinal photoreceptors development.,similarity:Belongs to the MAGUK family.,similarity:Contains 1 guanylate kinase-like domain.,similarity:Contains 1 PDZ (DHR) domain.,similarity:Contains 1 SH3 domain.,similarity:Contains 2 L27 domains.,subcellular location:Detected at the outer limiting membrane (OLM) and in the outer plexiform layer (OPL) of the retina. At the OLM, detected apical to the adherens junction (AJ).,subunit:Interacts with MPDZ. May interact with GRIA2 (By similarity). Forms a complex with CRB1 and MPP5.,tissue specificity:Expressed in the retina (at protein level). Highly expressed in the retina. Lower amounts are detected in

Nanjing BYabscience technology Co.,Ltd



brain, testis, ARPE-19, RPE/choroid and fetal eye. Isoform 5 is retina-specific.,

Background

This gene encodes a member of the membrane-associated guanylate kinase (MAGUK) protein family, with an N-terminal PDZ domain, a central src homology 3 region (SH3), and a C-terminal guanylate kinase-like (GUK) domain. The protein is localized to the outer limiting membrane in the retina, and is thought to function in photoreceptor polarity and the organization of specialized intercellular junctions. Alternatively spliced transcript variants have been described, but their biological validity has not been determined. [provided by RefSeq, Jul 2008],

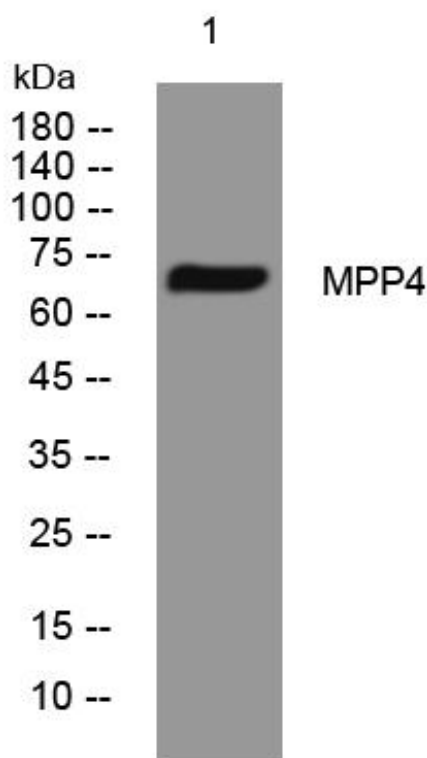
matters needing attention

Avoid repeated freezing and thawing!

Usage suggestions

This product can be used in immunological reaction related experiments. For more information, please consult technical personnel.

Products Images



Western Blot analysis of various cells using MPP4 mouse mAb