



# MS4A3 mouse mAb

Catalog No	BYmab-08699
Isotype	IgG
Reactivity	Human; Mouse
Applications	WB
Gene Name	MS4A3 CD20L HTM4
Protein Name	MS4A3
Immunogen	Synthesized peptide derived from human MS4A3 AA range: 101-151
Specificity	This antibody detects endogenous levels of MS4A3 at Human/Mouse
Formulation	Liquid in PBS containing 50% glycerol, 0.5% BSA and 0.02% sodium azide.
Source	Monoclonal, Mouse,IgG
Purification	The antibody was affinity-purified from mouse antiserum by affinity-chromatography using epitope-specific immunogen.
Dilution	WB 1:500-2000
Concentration	1 mg/ml
Purity	≥90%
Storage Stability	-20°C/1 year
Synonyms	
Observed Band	
Cell Pathway	Endomembrane system ; Multi-pass membrane protein . Cytoplasm, perinuclear region . Located in the perinuclear area.
Tissue Specificity	Expressed specifically in hematopoietic cells and tissues.
Function	caution:The sequence shown here is derived from an Ensembl automatic analysis pipeline and should be considered as preliminary data.,domain:The C-terminal region is required for binding to CDKN3-CDK2 complexes and the modulation of CDKN3 activity.,function:Hematopoietic modulator for the G1-S cell cycle transition. Modulates the level of phosphorylation of cyclin-dependent kinase 2 (CDK2) through its direct binding to cyclin-dependent kinase inhibitor 3 (CDKN3/KAP).,similarity:Belongs to the MS4A family.,subcellular location:Located in the perinuclear area.,subunit:Interacts with CDKN3. Interacts with CDKN3-CDK2 complexes through its binding to CDKN3; this interaction facilitates dissociation of cyclin A from CDKN3-CDK2 complexes.,tissue specificity:Expressed specifically in hematopoietic cells and tissues.,

Nanjing BYabscience technology Co.,Ltd



## Background

This gene encodes a member of the membrane-spanning 4A gene family. Members of this protein family are characterized by common structural features and similar intron/exon splice boundaries and display unique expression patterns among hematopoietic cells and nonlymphoid tissues. This family member likely plays a role in signal transduction and may function as a subunit associated with receptor complexes. The gene encoding this protein is localized to 11q12, among a cluster of related family members. Alternative splicing may result in multiple transcript variants; however, not all variants have been fully described. [provided by RefSeq, Jul 2008],

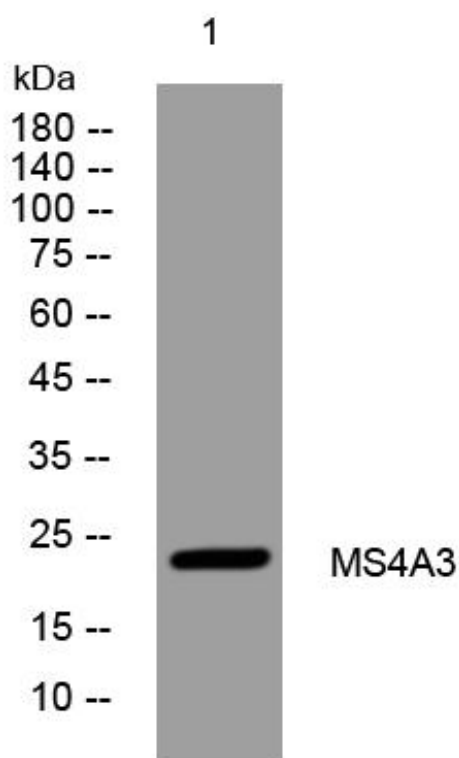
## matters needing attention

Avoid repeated freezing and thawing!

## Usage suggestions

This product can be used in immunological reaction related experiments. For more information, please consult technical personnel.

## Products Images



Western Blot analysis of various cells using MS4A3 mouse mAb