



# PRAM1 mouse mAb

Catalog No	BYmab-08689
Isotype	IgG
Reactivity	Human;Rat;Mouse;
Applications	WB
Gene Name	PRAMEF1
Protein Name	PRAM1
Immunogen	Synthesized peptide derived from human PRAM1 AA range: 329-379
Specificity	This antibody detects endogenous levels of PRAM1 at Human
Formulation	Liquid in PBS containing 50% glycerol, 0.5% BSA and 0.02% sodium azide.
Source	Monoclonal, Mouse,IgG
Purification	The antibody was affinity-purified from mouse antiserum by affinity-chromatography using epitope-specific immunogen.
Dilution	WB 1:500-2000
Concentration	1 mg/ml
Purity	≥90%
Storage Stability	-20°C/1 year
Synonyms	
Observed Band	
Cell Pathway	
Tissue Specificity	
Function	similarity:Belongs to the PRAME family.,similarity:Contains 3 LRR (leucine-rich) repeats.,
Background	This gene is a member of the PRAME (preferentially expressed antigen of melanoma) gene family which is expressed in many cancers but may function in reproductive tissues during development. Alternative promoter usage generates two transcript variants, which encode different isoforms. [provided by RefSeq, Jun 2014],
matters needing attention	Avoid repeated freezing and thawing!

Nanjing BYabscience technology Co.,Ltd

网址: [www.njbybio.com](http://www.njbybio.com)

官方热线: 025-5229-8998

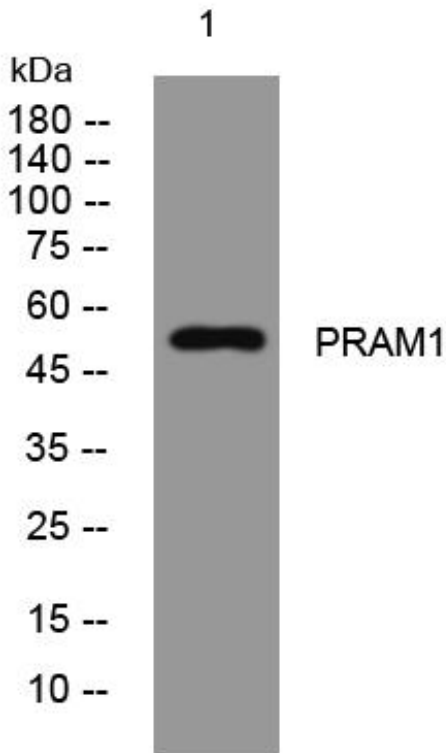
监督电话: 15950492658



### Usage suggestions

This product can be used in immunological reaction related experiments. For more information, please consult technical personnel.

## Products Images



Western Blot analysis of various cells using PRAM1 mouse mAb

Nanjing BYabs science technology Co.,Ltd

网址: [www.njbybio.com](http://www.njbybio.com)

官方热线: 025-5229-8998

监督电话: 15950492658